

# BRINK & CAMPMAN COLLECTION '25







# Index

## Tufted & Woven

Jazz	10
Ray	12
Spring	14
Young	16
Origin	18
Gravel	20
Arch	22
Pop Art	24
Dots	26
Rocks	30
Twinsset	34
Mural	38
Shade	40

## Handwoven

Grid	46
Frame	48
Nest	50
Bond	52
Pebble	54
Marble	56
Grain	58
Craft	62
Atelier	70
Artisan	72

## Handknotted Handtufted

Yeti	76
Element	80
Decor	86
Estella	110

## Brands

Laura Ashley	118
Morris&Co	122
Sanderson	126
Orla Kiely	130
Wedgwood	134
Ted Baker	138
Harlequin	142
Scion	146
Florence Broadhurst	150

B&C Overview	152
--------------	-----

# Brink & Campman

Welcome to Brink & Campman, where tradition meets innovation.

Established in 1897, we have over a century of experience in crafting, designing and developing exceptional rugs that elevate any space.

At our own factory and weave mill, skilled artisans work hand-in-hand with traditional looms and advanced robot tuft machines, ensuring each piece is meticulously crafted with an eye for every detail. Next to this we have an in-house design studio that is the heart of our company, here all our collections and developments sprout.

We pride ourselves on our thorough approach, from concept to completion, ensuring the highest quality in every rug we produce. We blend traditional craftsmanship with cutting-edge technology to bring you rugs that are not only beautiful but also a joy to own.

Beyond our unique B&C collection, we develop and produce collections for globally renowned brands in the home interior and fashion world. These additional collections contribute to a comprehensive offering of rugs, developed from fresh perspectives and diverse techniques.

For generations, we have cooperated with trusted partners who supply rugs crafted using a variety of techniques, enriching our collections and offering you a diverse range of styles and finishes. These long-standing collaborations reflect our commitment to excellence and our dedication to providing the best for our customers.

Experience the perfect blend of tradition and technology, artistry and precision, with Brink & Campman. We create rugs that become a part of your life.

B&C



# Size Matters

## Any size on request

Is it a small rug or an extra-large rug that is creating defined areas in the room? Size does matter!

The impact of a rug with its texture and colour on a room is definitely there, whether you choose a small version or an extra-large. Depending on the technique Brink & Campman offers you a vast range of standard sizes. Would you like to order another size? No problem, we tailor your customer's desires and requirements with love. Please ask our sales service team for the details and specifications.



140 x 200 cm / 4'7" x 6'7"



170 x 240 cm / 5'7" x 7'10"



200 x 300 cm / 6'7" x 9'8"



250 x 350 cm / 8'2" x 11'6"

# Shape Matters

## Any shape on request

Is it a curved carpet or a hexagon shaped rug which is setting the tone in the room? Shape does matter!

Next to rectangles Brink & Campman offers you an unlimited variety of rug shapes for all tufted qualities. The only boundaries are the sizes of the ground screen. We tailor your customer's desires and requirements with love. Whether it is a circle, an organic shape, a flower or even a mythical animal we craft it with joy for your customer. Any shape will do! Please ask our sales service team for the details and specifications.





# Craftsmanship

The art of rug-making at Brink & Campman is steeped in tradition and craftsmanship. Our craftsmen and -women, with their years of experience and inherited expertise dating back to our founding, meticulously weave and tuft each rug, ensuring unwavering quality. We take pride in our ability to innovate with different pile heights, yarn thicknesses, and qualities using both traditional looms and advanced robotic tufting machines, all while maintaining consistent excellence.

Our mastery extends to combining simple elements into countless variations: thick yarns, thin yarns, combinations of thick-thin, high piles with loops, and other innovative textures. To guarantee durability, thick yarns undergo a rigorous in-house fulling process that strengthens wool fibers and enhances rug longevity.

Partnering with skilled textile dyers, we achieve vibrant colours and subtle shades, from solid hues to naturally inspired tones and uniquely irregular dyes, all executed to perfection. This dedication to craftsmanship and innovation ensures that each Brink & Campman rug is not just a product, but a testament to enduring quality and creativity.

# Jazz

tufted  
pure new wool  
**jazz lush - high pile**  
total weight: ca 6190 gr/m<sup>2</sup>  
pile weight: ca 4790 gr/m<sup>2</sup>  
pile height: ca 10/70 mm  
**jazz dense - loop pile**  
total weight: ca 3100 gr/m<sup>2</sup>  
pile weight: ca 1700 gr/m<sup>2</sup>  
pile height: ca 5 mm

available sizes:  
140 x 200 4'7" x 6'7"  
170 x 240 5'7" x 7'10"  
200 x 300 6'7" x 9'8"  
250 x 350 8'2" x 11'6"  
custom sizes on request

An inspired blend of natural, undyed wool yarns combined with irregularly dyed threads has given rise to the JAZZ series, offered in two distinct variations: Dense and Lush. Each variation embodies its own unique character and aesthetic. The Dense variation of the JAZZ series features a rhythmic repetition of loops, enhanced by the interplay of the two types of yarns that twist around each other. The Lush variation indulges in luxury with its lavish, over-the-top long pile.



**Jazz Lush carbon**  
158704



**Jazz Dense carbon**  
158904



**Jazz Lush pumpkin**  
158703



**Jazz Lush natural**  
158701



**Jazz Lush storm**  
158728



**Jazz Dense pumpkin**  
158903



**Jazz Dense natural**  
158901



**Jazz Dense storm**  
158928



Jazz Lush pumpkin 158703



# Ray

axminster woven  
pure new wool  
total weight: ca 3900 gr/m<sup>2</sup>  
pile weight: ca 2500 gr/m<sup>2</sup>  
pile height: ca 15/45 mm

available sizes:  
140 x 200 4'7" x 6'7"  
170 x 240 5'7" x 7'10"  
200 x 300 6'7" x 9'8"  
250 x 350 8'2" x 11'6"  
custom sizes on request

Subtle in nature, with thick, undyed felted yarns playing a prominent role, the RAY series casts a radiant glow like a sunbeam in any living room. The rugs are characterized by their light hues, achieved through a blend of undyed thin and thick yarns, accented by subtle touches of colour.



**Ray soft desert**  
158601



**Ray soft forest**  
158607



**Ray soft carbon**  
158604



# Spring

tufted  
pure new wool  
total weight: ca 3900 gr/m<sup>2</sup>  
pile weight: ca 2500 gr/m<sup>2</sup>  
pile height: ca 15/45 mm

available sizes:  
140 x 200 4'7" x 6'7"  
170 x 240 5'7" x 7'10"  
200 x 300 6'7" x 9'8"  
250 x 350 8'2" x 11'6"  
custom sizes on request

The designers at Brink & Campman's studio thrive on experimenting with colours and yarns. Their creativity knows no bounds, and they particularly enjoy playing with the textures that emerge when combining different types of yarns. This passion and ingenuity have laid the foundation for the SPRING series, where the fusion of thick and thin yarns creates a visually stimulating and dynamic rug collection.



**Spring natural**  
059111



**Spring calendula**  
059103



**Spring moss**  
059137



**Spring forest**  
059117



**Spring pumpkin**  
059123



**Spring evergreen**  
059107



**Spring carbon**  
059114



Spring forest 059117



# Young

tufted  
pure new wool  
total weight: ca 3900 gr/m<sup>2</sup>  
pile weight: ca 2500 gr/m<sup>2</sup>  
pile height: ca 15/45 mm

available sizes:  
140 x 200 4'7" x 6'7"  
160 x 230 5'3" x 7'6"  
200 x 280 6'7" x 9'2"  
250 x 350 8'2" x 11'6"  
custom sizes on request

The YOUNG series stands out for its use of yarns blended in tonal colours. This approach creates a harmonious palette within a single colour family, resulting in a cohesive and serene aesthetics. The carefully curated colour scheme ensures that YOUNG rugs seamlessly integrate into any interior, offering versatility and timeless appeal.



**Young glacier**  
061804



**Young natural**  
061801



**Young driftwood**  
061805



**Young chutney**  
061806

Young chutney 061806

# Origin

axminster woven  
 pure new wool  
**origin low - low pile**  
 total weight: ca 3160 gr/m<sup>2</sup>  
 pile weight: ca 1780 gr/m<sup>2</sup>  
 pile height: ca 18/19 mm  
 available sizes:  
 140 x 200 4'7" x 6'7"  
 170 x 240 5'7" x 7'10"  
 200 x 300 6'7" x 9'8"  
 250 x 350 8'2" x 11'6" (will be tufted)  
 custom sizes on request

axminster woven  
 pure new wool  
**origin high - high pile**  
 total weight: ca 4400 gr/m<sup>2</sup>  
 pile weight: ca 3000 gr/m<sup>2</sup>  
 pile height: ca 15/30 mm  
 available sizes:  
 140 x 200 4'7" x 6'7"  
 170 x 240 5'7" x 7'10"  
 200 x 300 6'7" x 9'8"  
 250 x 350 8'2" x 11'6" (will be tufted)  
 custom sizes on request

tufted  
 pure new wool  
**origin loop - loop pile**  
 total weight: ca 4150 gr/m<sup>2</sup>  
 pile weight: ca 2800 gr/m<sup>2</sup>  
 pile height: ca 30 mm  
 available sizes:  
 140 x 200 4'7" x 6'7"  
 170 x 240 5'7" x 7'10"  
 200 x 300 6'7" x 9'8"  
 250 x 350 8'2" x 11'6"  
 custom sizes on request



**Origin Low mist**  
066004



**Origin High mist**  
066104



**Origin Loop mist**  
066204



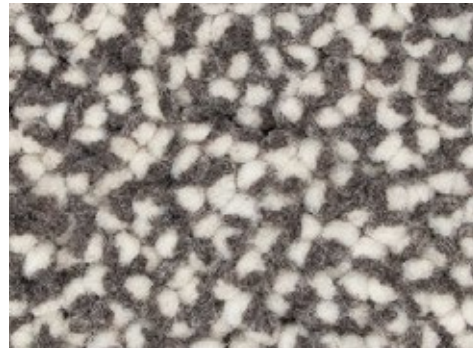
**Origin Low greige**  
066001



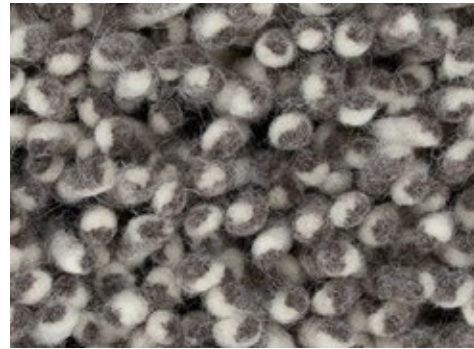
**Origin High greige**  
066101



**Origin Loop greige**  
066201



**Origin Low stone**  
066005



**Origin High stone**  
066105



**Origin Loop stone**  
066205



Origin High stone 066105



# Gravel

axminster woven  
pure new wool  
total weight: ca 4400 gr/m<sup>2</sup>  
pile weight: ca 3000 gr/m<sup>2</sup>  
pile height: ca 15/35 mm

available sizes:  
140 x 200 4'7" x 6'7"  
170 x 240 5'7" x 7'10"  
200 x 300 6'7" x 9'8"  
250 x 350 8'2" x 11'6" (will be tufted)  
custom sizes on request

The GRAVEL collection showcases its timeless character with understated, neutral colours. This collection is defined by its subtle elegance, making it a perfect addition to any interior.



**Gravel wool white**  
068009



**Gravel fog**  
068209



**Gravel smoke**  
068201



**Gravel dove**  
068001

# Arch

tufted  
pure new wool  
total weight: ca 4150 gr/m<sup>2</sup>  
pile weight: ca 2800 gr/m<sup>2</sup>  
pile height: ca 30 mm

available sizes:  
140 x 200 4'7" x 6'7"  
170 x 240 5'7" x 7'10"  
200 x 300 6'7" x 9'8"  
250 x 350 8'2" x 11'6"  
custom sizes on request

The ARCH collection is a series of robot tufted rugs distinguished by their sturdy loop pile, commonly referred to as bouclé in the world of flooring. This type of loop pile gives the rugs a distinct and consistent texture with a robust, flat surface, which is both visually appealing and versatile for various interior styles.



**Arch glacier**  
067004



**Arch natural**  
067001



**Arch chutney**  
067006



**Arch driftwood**  
067005



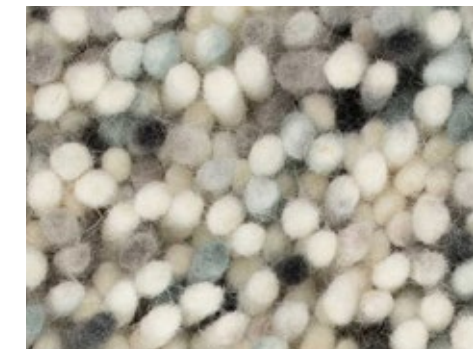
Arch natural 067001

# Pop Art

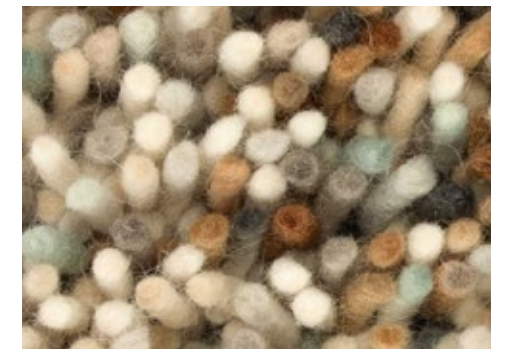
axminster woven  
pure new wool  
total weight: ca 4000 gr/m<sup>2</sup>  
pile weight: ca 2600 gr/m<sup>2</sup>  
pile height: ca 15/40 mm

available sizes:  
140 x 200 4'7" x 6'7"  
160 x 230 5'3" x 7'6"  
200 x 280 6'7" x 9'2"  
custom sizes on request

At Brink & Campman, we are not afraid of colour! The POP ART series stands out with its vibrant, multicoloured blends that capture the eye and transform any space. These lively and cheerful blends inject a sense of joy and optimism into your living room, brightening your environment and uplifting your mood.



**Pop Art glacier**  
066904



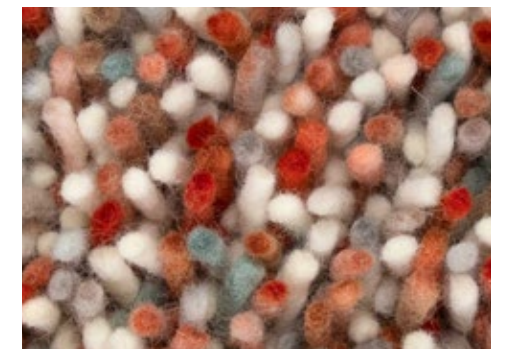
**Pop Art natural**  
066901



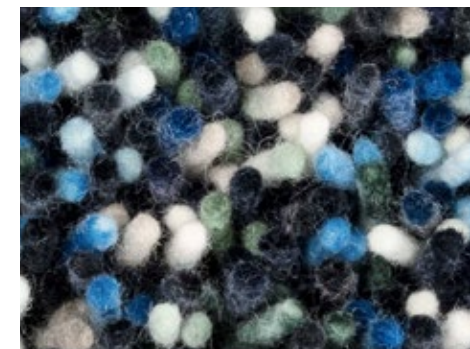
**Pop Art steel**  
066914



**Pop Art chutney**  
066907



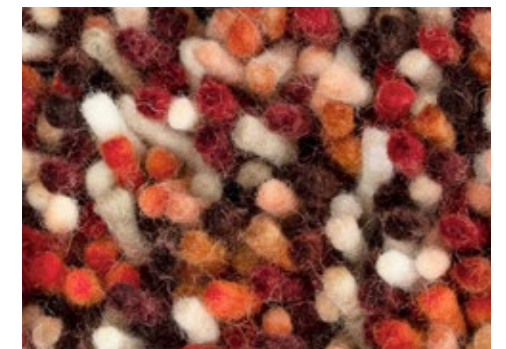
**Pop Art coral**  
066902



**Pop Art true blue**  
066908



**Pop Art amber**  
066926



**Pop Art tomato**  
066900

# Dots

axminster woven  
pure new wool  
total weight: ca 4500 gr/m<sup>2</sup>  
pile weight: ca 3000 gr/m<sup>2</sup>  
pile height: ca 25/30 mm

available sizes:  
140 x 200 4'7" x 6'7"  
170 x 240 5'7" x 7'10"  
200 x 300 6'7" x 9'8"  
250 x 350 8'2" x 11'6"  
custom sizes on request

The carefully curated colour combinations of our Dots series have a unique ability to adapt like a chameleon. In serene and minimalist settings, these rugs add a robust texture with subtle hints of colour, gently enhancing the space without overwhelming it. Conversely, in more vibrant and expressive interiors, the restrained colour palettes of the rugs provide a soothing counterbalance, helping to harmonize and soften the overall aesthetic.



**Dots desert**  
170531



**Dots pumpkin**  
170523



**Dots calendula**  
170213



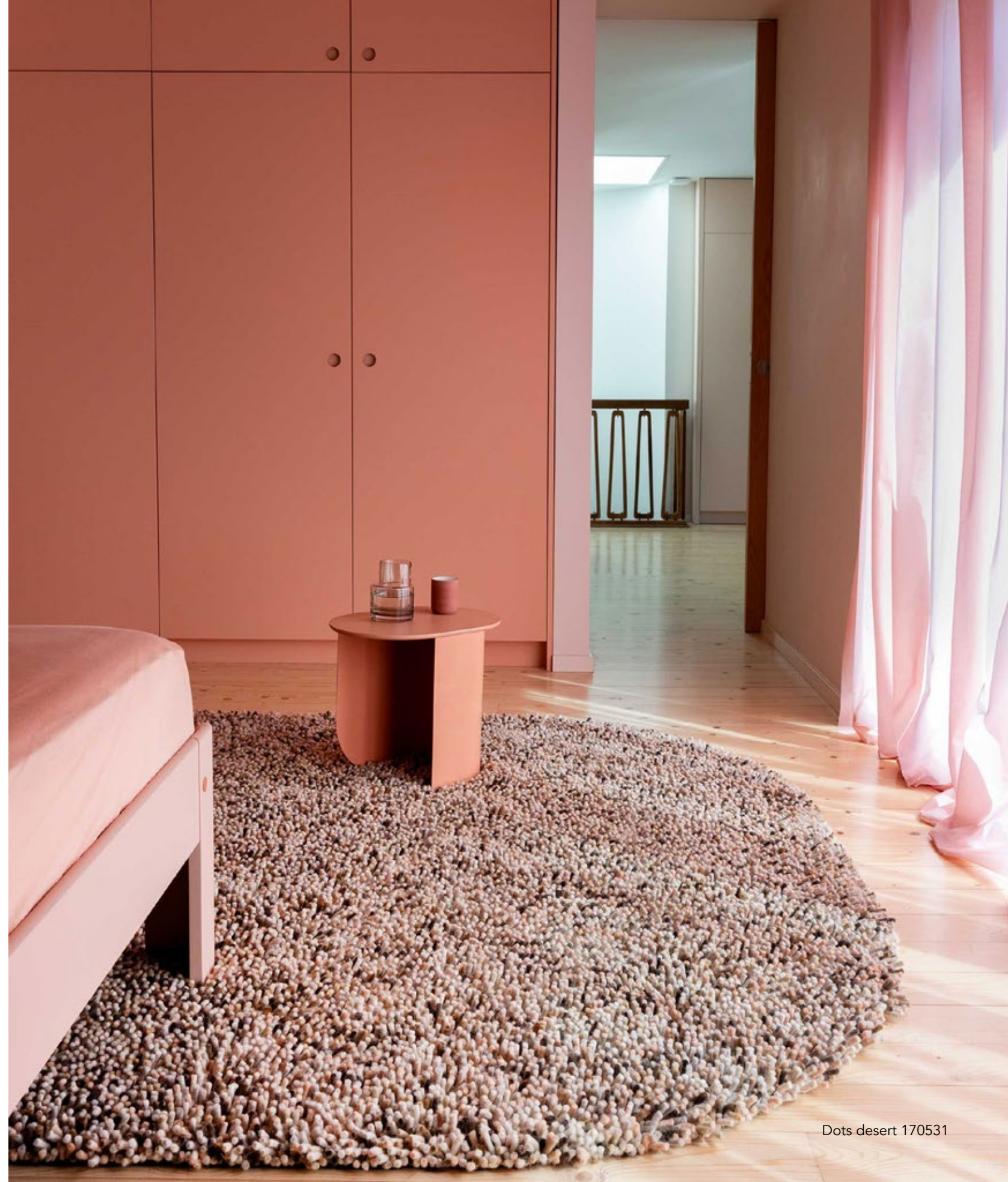
**Dots terrazzo**  
170401



**Dots storm**  
170528



**Dots confetti**  
170411



Dots desert 170531



# Dots

axminster woven  
pure new wool  
total weight: ca 4500 gr/m<sup>2</sup>  
pile weight: ca 3000 gr/m<sup>2</sup>  
pile height: ca 25/30 mm

available sizes:  
140 x 200 4'7" x 6'7"  
170 x 240 5'7" x 7'10"  
200 x 300 6'7" x 9'8"  
250 x 350 8'2" x 11'6"  
custom sizes on request

The carefully curated colour combinations of our Dots series have a unique ability to adapt like a chameleon. In serene and minimalist settings, these rugs add a robust texture with subtle hints of colour, gently enhancing the space without overwhelming it. Conversely, in more vibrant and expressive interiors, the restrained colour palettes of the rugs provide a soothing counterbalance, helping to harmonize and soften the overall aesthetic.



**Dots moss**  
170537



**Dots natural**  
170501



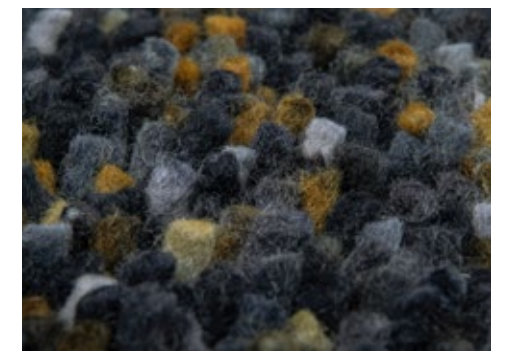
**Dots frost**  
170504



**Dots soil**  
170405



**Dots forest**  
170547



**Dots carbon**  
170534

Dots moss 170537



# Rocks

axminster woven  
pure new wool  
total weight: ca 5500 gr/m<sup>2</sup>  
pile weight: ca 4000 gr/m<sup>2</sup>  
pile height: ca 20/50 mm

available sizes:  
140 x 200 4'7" x 6'7"  
170 x 240 5'7" x 7'10"  
200 x 300 6'7" x 9'8"  
250 x 300 8'2" x 9'8"  
250 x 350 8'2" x 11'6"  
custom sizes on request

This series of rugs boasts a robust and sturdy appearance, a hallmark of quality and craftsmanship. The standard sizes are Axminster woven in our own product facility, using a blend of soy jute and organic cotton as warp and weft, which provides a durable and eco-friendly base. The high pile, which gives the rugs their luxurious texture, is made from felted wool yarns. One of the standout features of this series is its rich and varied colour palette. Through a sophisticated dyeing process, the yarns become multicoloured, creating a depth and vibrancy that allows these rugs to complement a wide range of interior designs.



**Rocks frost**  
070504



**Rocks terrazzo**  
070401



**Rocks natural**  
070501



**Rocks storm**  
070528



**Rocks confetti**  
070411



**Rocks calendula**  
070213



Rocks frost 070504



# Rocks

axminster woven  
pure new wool  
total weight: ca 5500 gr/m<sup>2</sup>  
pile weight: ca 4000 gr/m<sup>2</sup>  
pile height: ca 20/50 mm

available sizes:  
140 x 200 4'7" x 6'7"  
170 x 240 5'7" x 7'10"  
200 x 300 6'7" x 9'8"  
250 x 300 8'2" x 9'8"  
250 x 350 8'2" x 11'6"  
custom sizes on request

This series of rugs boasts a robust and sturdy appearance, hallmark of quality and craftsmanship. The standard sizes are Axminster woven in our own product facility, using a blend of soy jute and organic cotton as warp and weft, which provides a durable and eco-friendly base. The high pile, which gives the rugs their luxurious texture, is made from felted wool yarns. One of the standout features of this series is its rich and varied colour palette. Through a sophisticated dyeing process, the yarns become multicoloured, creating a depth and vibrancy that allows these rugs to complement a wide range of interior designs.



**Rocks pumpkin**  
070523



**Rocks moss**  
070537



**Rocks forest**  
070547



**Rocks desert**  
070531



**Rocks soil**  
070405



**Rocks carbon**  
070534

# Twinsset | Shore, Terrain & Urban

tufted  
pure new wool/Tencel™  
total weight: ca 3700 gr/m<sup>2</sup>  
pile weight: ca 2200 gr/m<sup>2</sup>  
pile height: ca 17 mm

available sizes:  
140 x 200 4'7" x 6'7"  
170 x 240 5'7" x 7'10"  
200 x 300 6'7" x 9'8"  
250 x 350 8'2" x 11'6"  
custom sizes on request

available in a range of colours



With exactly two key features, the designers at Brink & Campman have crafted this exclusive series. Utilizing a simple high pile and loop technique, this beautiful yarn is brought to its full expression. The yarn's subtle sheen is achieved through a blend of wool and eucalyptus fibers. In loop form, the colours appear light and softly lustrous, while in cut pile they resemble velvet with a deep glow.



Twinsset Urban 022135



Twinsset Urban oyster  
022104



Twinsset Terrain shiitake  
121734



Twinsset Shore olive  
121607



Twinsset Shore Olive 121607



Twinset Terrain shiitake 121734

# Twinset | Shore, Terrain & Urban



**Twinset oyster**  
Urban 022104  
Terrain 121704  
Shore 121604



**Twinset taupe**  
Urban 022101  
Terrain 121701  
Shore 121601



**Twinset silver**  
Urban 022131  
Terrain 121731  
Shore 121631



**Twinset tan**  
Urban 022152  
Terrain 121752  
Shore 121652



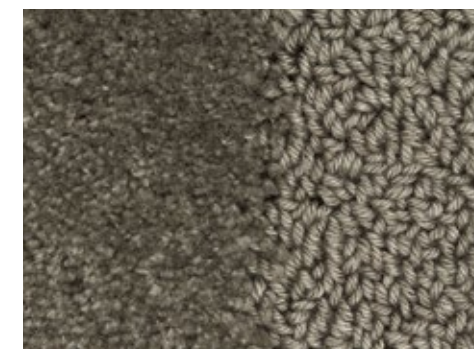
**Twinset antique**  
Urban 022106  
Terrain 121706  
Shore 121606



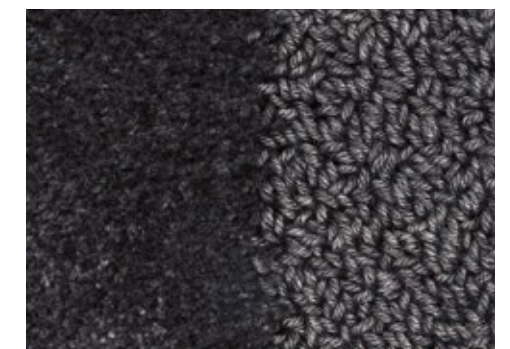
**Twinset golden**  
Urban 022116  
Terrain 121716  
Shore 121616



**Twinset olive**  
Urban 022107  
Terrain 121707  
Shore 121607



**Twinset shiitake**  
Urban 022134  
Terrain 121734  
Shore 121634



**Twinset graphite**  
Urban 022135  
Terrain 121735  
Shore 121635

# Mural | Form, Modest & Bold

tufted  
 pure new wool  
 total weight: ca 3500 gr/m<sup>2</sup>  
 pile weight: ca 2000 gr/m<sup>2</sup>  
 pile height: ca 17 mm

available sizes:

Form	Modest & Bold
140 x 240 4'7" x 7'10"	140 x 200 4'7" x 6'7"
160 x 280 5'3" x 9'2"	170 x 240 5'7" x 7'10"
200 x 350 6'7" x 11'6"	200 x 280 6'7" x 9'2"
250 x 440 8'2" x 14'5"	250 x 350 8'2" x 11'6"

custom sizes on request  
 each design available in all 3 colours

Resembling a bas-relief carved in stone, MURAL makes a striking impression. Abstract and solid forms are meticulously tufted in a high pile and low loop combination, available in three distinct colours and shapes. This refined design of shapes, textures, and varying heights adds a profound architectural element to any room.



**Mural Form forest**  
121107  
**Mural Form burgundy**  
121130  
**Mural Form cement**  
121134



**Mural Modest burgundy**  
121100  
**Mural Modest forest**  
121117  
**Mural Modest cement**  
121114



**Mural Bold cement**  
121104  
**Mural Bold forest**  
121127  
**Mural Bold burgundy**  
121120





Shade Low plum-fig 010100

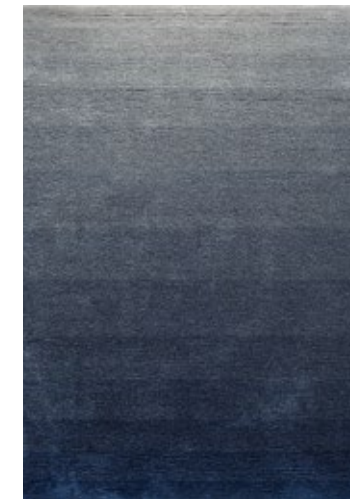
# Shade | Low

tufted  
 pure new wool  
 total weight: ca 4000 gr/m<sup>2</sup>  
 pile weight: ca 2650 gr/m<sup>2</sup>  
 pile height: ca 18 mm

available sizes:  
 170 x 240 5'3" x 9'2"  
 200 x 300 6'7" x 9'8"  
 250 x 350 8'2" x 11'6"  
 custom sizes on request

From golden yellow to olive green, from navy blue to silver-grey, from bold to subdued, the SHADE series embodies a refined spectrum of eight exquisite colour transitions. Each transition is meticulously crafted to blend seamlessly into various interior settings, offering versatility and elegance.

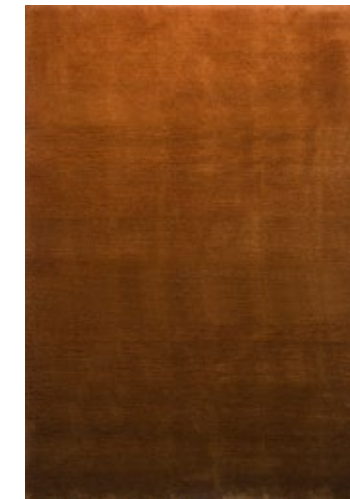
Deep, rich colours in fine wool are expertly tufted to create sophisticated gradients that resemble precious jewels for your floor. This luxurious quality not only enhances the visual appeal but also adds a plush, inviting texture underfoot, making SHADE rugs both functional and aesthetically pleasing.



Shade Low silver-polar night  
010104



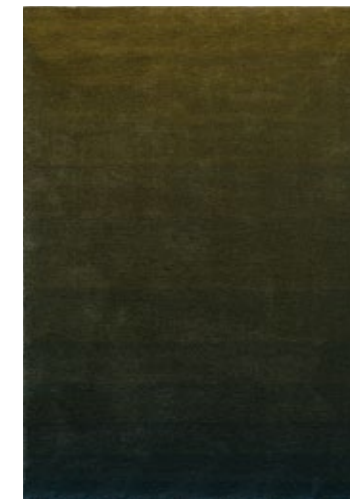
Shade Low beige-dark chocolate  
010101



Shade Low umber-tobacco  
010103



Shade Low olive-deep forest  
010107



Shade Low brass-indigo  
010108



Shade Low plum-fig  
010100



Shade Low lemon-gold  
010106



Shade Low electric blue-aubergine  
010118

# Shade | High

tufted  
pure new wool  
total weight: ca 3750 gr/m<sup>2</sup>  
pile weight: ca 2380 gr/m<sup>2</sup>  
pile height: ca 45 mm

available sizes:  
170 x 240 5'3" x 9'2"  
200 x 300 6'7" x 9'8"  
250 x 350 8'2" x 11'6"  
custom sizes on request

From golden yellow to olive green, from navy blue to silver-grey, from bold to subdued, the SHADE series embodies a refined spectrum of eight exquisite colour transitions. Each transition is meticulously crafted to blend seamlessly into various interior settings, offering versatility and elegance.

Deep, rich colours in fine wool are expertly tufted to create sophisticated gradients that resemble precious jewels for your floor. This luxurious quality not only enhances the visual appeal but also adds a plush, inviting texture underfoot, making SHADE rugs both functional and aesthetically pleasing.



Shade High silver-polar night  
011904



Shade High beige-dark  
chocolate 011901



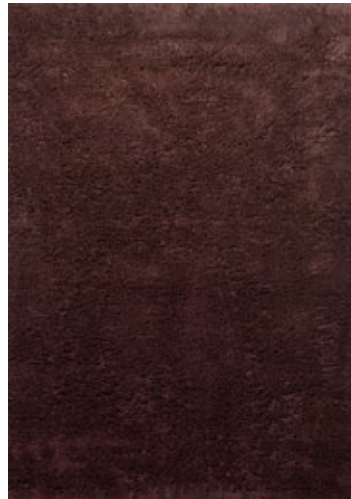
Shade High umber-tobacco  
011903



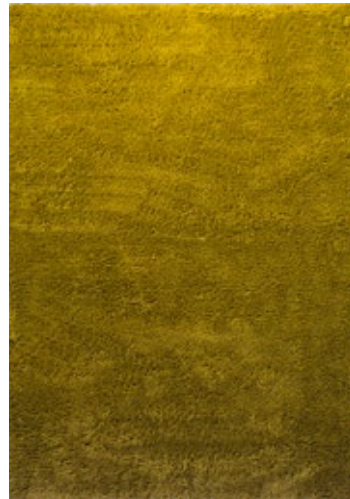
Shade High olive-deep forest  
011907



Shade High brass-indigo  
011908



Shade High plum-fig  
011900



Shade High lemon-gold  
011906



Shade High electric blue-aubergine  
011918



Shade High umber-tobacco 011903



# Handcrafted

Creating a handwoven, flatwoven wool rug is an intricate art form that elevates our craftsmanship. These rugs are double-sided usable, offering versatility and extended use. Our new series of flatwoven wool rugs are a testament to the seamless integration of traditional craftsmanship and modern design. Our designs blend timeless aesthetics with modern flair.

Each rug is meticulously handwoven by skilled craftsmen and -women, ensuring the highest quality and attention to detail. These rugs not only enhance your living space but also tell a story of dedication and creativity.

In collaboration with our trustworthy partners, we have developed truly unique designs that stand out from the rest. By blending the old with the new and incorporating our own felted yarns, we have introduced four new series of flatwoven wool rugs. With an innovative approach towards the traditional handweaving process, the outcome has resulted in series that capture both beauty and artistry.





# Grid

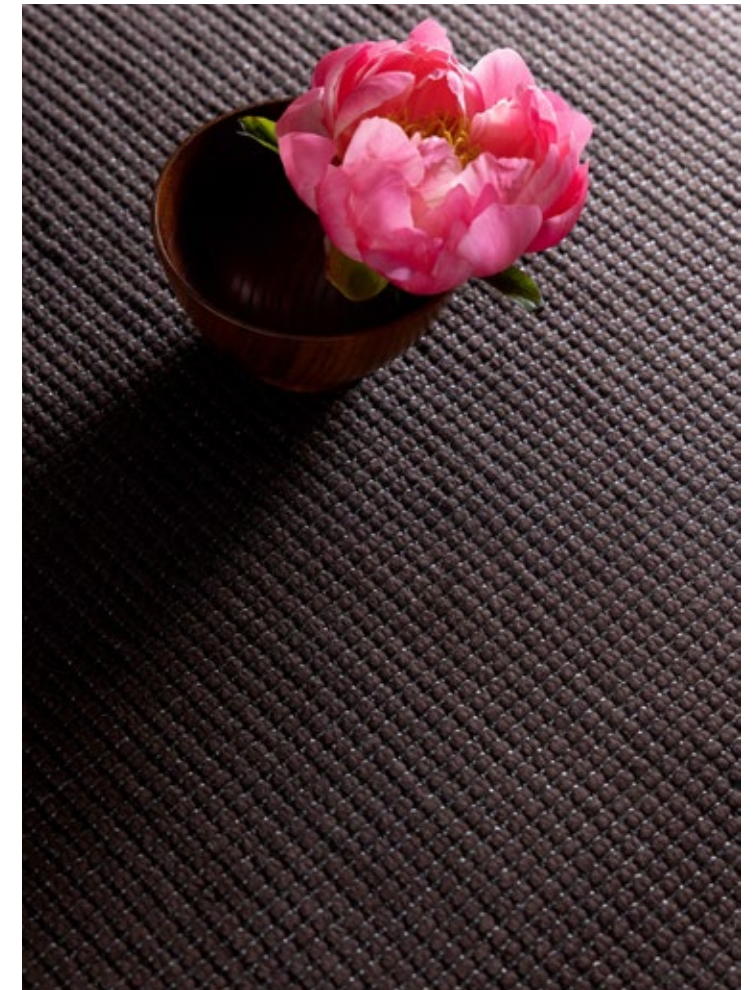
handwoven  
pure new wool  
total weight: ca 1750 gr/m<sup>2</sup>  
no pile due to flatweave structure

available sizes:  
140 x 200 4'7" x 6'7"  
170 x 240 5'7" x 7'10"  
200 x 300 6'7" x 9'8"  
250 x 350 8'2" x 11'6"  
custom sizes on request

reversible

Explore our exclusive series of flatweave rugs GRID, where meticulous craftsmanship meets contemporary design. Each rug features a sleek grid pattern in graphic, solid colours.

Crafted from luxurious felted wool, these rugs are not only soft to the touch but also durable for everyday use. Their reversible design offers versatile styling options, allowing you to refresh your space with a simple flip.



**Grid stone**  
129011



**Grid cacao**  
129015



**Grid slate**  
129004



**Grid ink**  
129008

# Frame

handwoven  
pure new wool/sisal  
total weight: ca 1800 gr/m<sup>2</sup>  
no pile due to flatweave structure

available sizes:  
140 x 200 4'7" x 6'7"  
170 x 240 5'7" x 7'10"  
200 x 300 6'7" x 9'8"  
250 x 350 8'2" x 11'6"  
custom sizes on request

reversible

Introducing our stylish and modernistic flatwoven rugs, designed to frame your space with modest elegance. Crafted from a blend of wool and sisal, these reversible rugs feature an all-over block pattern in friendly colours that bring warmth to any room. The rectangular shape ensures versatility in placement, whether in the living room, dining area, or bedroom.



**Frame natural**  
129311



**Frame mustard**  
129306



**Frame leaf**  
129307



**Frame brick**  
129300



# Nest

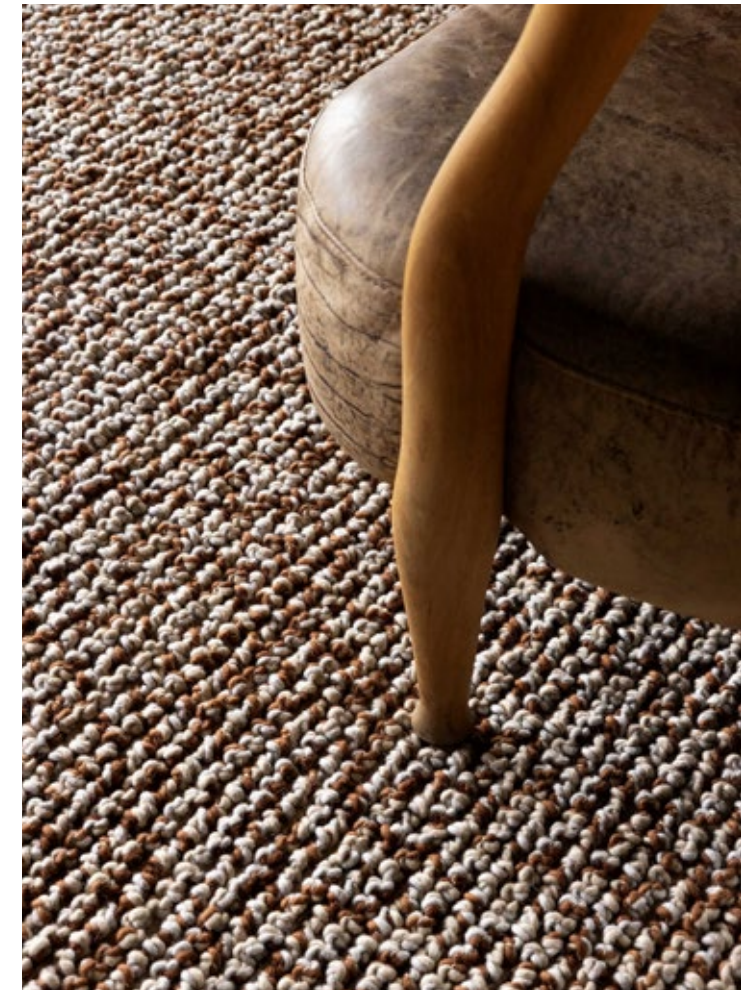
handwoven  
pure new wool  
total weight: ca 3200 gr/m<sup>2</sup>  
no pile due to flatweave structure

available sizes:  
140 x 200 4'7" x 6'7"  
170 x 240 5'7" x 7'10"  
200 x 300 6'7" x 9'8"  
250 x 350 8'2" x 11'6"  
custom sizes on request

reversible

---

Twisted knots and nesting patterns; explore the complexity of the flatweave series NEST. Three yarns are knotted and handloomed to obtain this sturdy flatweave rug in a friendly look. We take pride in using our own yarns, ensuring quality and the joy of combining colours that elevate your space.



**Nest ink**  
129428



**Nest leather**  
129403

# Bond

handwoven  
pure new wool/jute  
total weight: ca 3800 gr/m<sup>2</sup>  
no pile due to flatweave structure

available sizes:  
140 x 200 4'7" x 6'7"  
170 x 240 5'7" x 7'10"  
200 x 300 6'7" x 9'8"  
250 x 350 8'2" x 11'6"  
custom sizes on request

reversible

Introducing our series BOND of two modern flatwoven rugs, crafted with careful attention to detail. These rugs feature solid colours and are handloomed using knotted thick, felted yarns, ensuring durability and a luxurious texture. Each rug is reversible, offering versatility and longevity in your home decor.



**Bond ash**  
129604



**Bond moss**  
129617





# Pebble

handwoven  
pure new wool  
total weight: ca 4500 gr/m<sup>2</sup>  
no pile due to flatweave structure

available sizes:  
140 x 200 4'7" x 6'7"  
170 x 240 5'7" x 7'10"  
200 x 300 6'7" x 9'8"  
250 x 350 8'2" x 11'6"  
custom sizes on request

reversible

This handwoven series beautifully captures the textured essence of a pebble beach. It features thick felted yarns and yarns dyed using a special process, intricately knotted and woven into a dense flat weave. The PEBBLE rugs exude a luxurious richness combined with a timeless appeal, making them a sophisticated addition to any interior.



**Pebble light natural**  
129811



**Pebble natural**  
129801



**Pebble moss**  
129837



**Pebble pumpkin**  
129823



**Pebble frost**  
129804

# Marble

handwoven  
wool & flax  
total weight: ca 4500 gr/m<sup>2</sup>  
no pile due to flatweave structure

available sizes:  
140 x 200 4'7" x 6'7"  
170 x 240 5'7" x 7'10"  
200 x 300 6'7" x 9'8"  
250 x 350 8'2" x 11'6"  
custom sizes on request

The MARBLE series comprises handwoven rugs that showcase intricate craftsmanship. These rugs are adorned with 'marbles'—thick clusters crafted from a blend of our luxurious, thick felted yarns. Available in a variety of colour combinations, the MARBLE series effortlessly complements any interior decor. The harmonious mix of colours within each rug ensures versatility, making them an ideal choice for enhancing the aesthetic appeal of living spaces. Whether placed in a minimalist setting or used to add depth to a vibrant room, these rugs bring a touch of elegance and warmth.



**Marble weather**  
029501



**Marble calendula**  
029503



**Marble acid**  
029517



**Marble storm**  
029528



**Marble moss**  
029537



**Marble pumpkin**  
029523



**Marble carbon**  
029534



**Marble forest**  
029547



**Marble russet**  
029500



Marble storm 029528



# Grain

handwoven  
pure new wool  
total weight: ca 2200 gr/m<sup>2</sup>  
no pile due to flatweave structure

available sizes:  
140 x 200 4'7" x 6'7"  
160 x 230 5'3" x 7'6"  
200 x 280 6'7" x 9'2"  
250 x 350 8'2" x 11'6"  
custom sizes on request

reversible

Handwoven is the GRAIN series, where our vigorous yarns are transformed into an attractive interplay of fresh stripes within this flat weave. Its reversible design not only enhances its aesthetic versatility but also ensures prolonged durability, making it a practical and stylish addition to any space.



**Grain light natural**  
013501



**Grain coral**  
013502



**Grain glacier**  
013504



**Grain driftwood**  
013505



**Grain chutney**  
013506



**Grain lemon**  
013507

# Artisanal

Immerse yourself in the world of artisanal rugs, where a long tradition of craftsmanship is combined with modernistic aesthetics to create truly unique pieces made by hand, piece by piece. Our collection celebrates the beauty of handweaving and hand-knotting, featuring robust and strong materials like jute, handspun wool, and cotton.

Our skilled artisans have perfected the art of different techniques such as double weaving, braid weaving, kilim weaving and hand-knotting, techniques passed down through generations. Each rug is a testament to their dedication and expertise, showcasing intricate patterns and textures that add depth and character to any space.

We use only the finest materials to create our woven rugs. Handspun wool, jute, and cotton are selected for their durability and natural appeal. These materials not only ensure a robust and strong product but also bring a sense of warmth and comfort to your home with a lot of tactility. In our hand-knotted rugs you'll find wool and viscose for a lustrous appearance.

Whether you prefer the intricate details of hand-knotted rugs or the simplicity of flatwoven surfaces, our collection offers something for every taste. Each rug is a versatile piece that can complement a wide range of interior styles, from classic to modern. Our artisanal rugs reflect a rich heritage and a forward-thinking approach to design.





# Craft | Fundament

handwoven  
wool/jute/cotton  
total weight: ca 2500 gr/m<sup>2</sup>  
no pile due to flatweave structure

available sizes:  
140 x 200 4'7" x 6'7"  
160 x 230 5'3" x 7'6"  
200 x 280 6'7" x 9'2"  
250 x 350 8'2" x 11'6"  
no custom sizes

reversible

Discover the timeless charm of our handcrafted creations, where tradition meets artistry in every fiber. Embracing the beauty of irregularity, no two pieces are the same, making each item a unique masterpiece. The FUNDAMENT shows us bold and monolith shapes in undyed, handspun wool combined with an earthy jute. Monumental designs made to master the room. Versatile in use; the rug is reversible.



Craft Fundament chocolate cream 149305



Craft Fundament wool white  
149309



Craft Fundament caramel  
149311



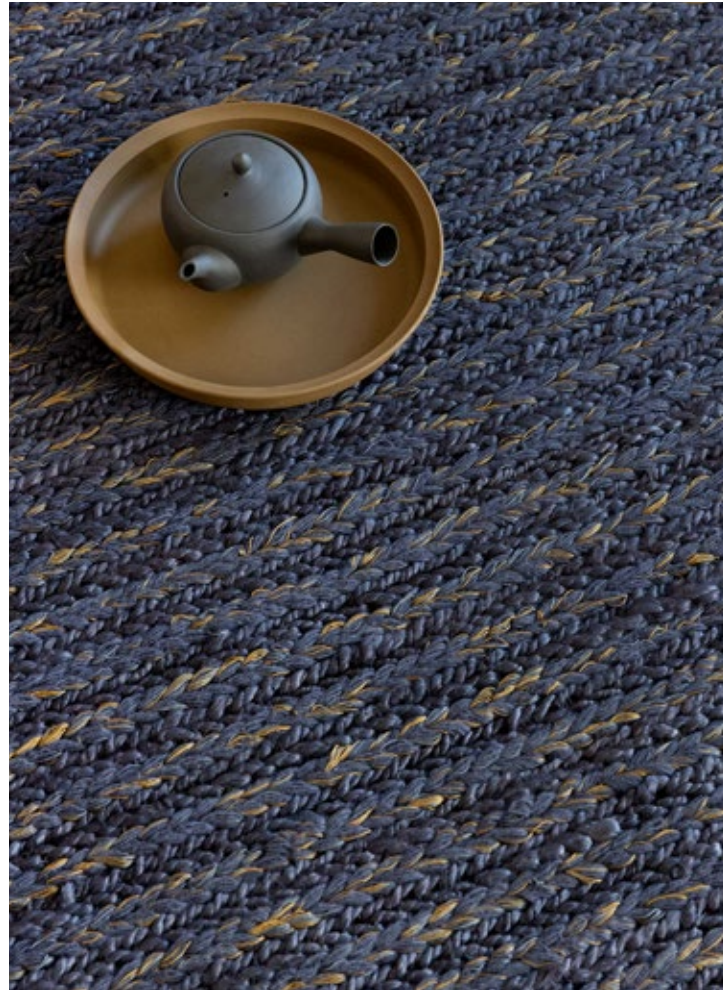
Craft Fundament chocolate cream  
149305

# Craft | Plait

handwoven  
jute/wool/cotton/viscose  
total weight: ca 2500 gr/m<sup>2</sup>  
no pile due to flatweave structure

available sizes:  
140 x 200 4'7" x 6'7"  
160 x 230 5'3" x 7'6"  
200 x 280 6'7" x 9'2"  
250 x 350 8'2" x 11'6"  
no custom sizes

Discover the timeless charm of our handcrafted creations, where tradition meets artistry in every fiber. Embracing the beauty of irregularity, no two pieces are the same, making each item a unique masterpiece. Using the age-old technique Sumak weaving, the artisans made the refined series PLAIT; a double weave made from natural fibers. The back of the rug is made of cotton. The top features braided lines of wool and jute, accented with shiny viscose yarns.



**Craft Plait natural**  
049006



**Craft Plait denim**  
049008



**Craft Plait stone**  
049004



Craft Plait Natural 049006



Craft Matter Plain ash grey 049107

# Craft | Matter plain

handwoven  
wool/cotton  
total weight: ca 3200 gr/m<sup>2</sup>  
no pile due to flatweave structure

available sizes:  
140 x 200 4'7" x 6'7"  
160 x 230 5'3" x 7'6"  
200 x 280 6'7" x 9'2"  
250 x 350 8'2" x 11'6"  
no custom sizes

reversible

Discover the timeless charm of our handcrafted creations, where tradition meets artistry in every fiber. Embracing the beauty of irregularity, no two pieces are the same, making each item a unique masterpiece. These methods, passed down through generations, ensure that each piece carries the legacy of its maker. Our designers combined this history and heritage with modern aesthetics to bring a unique touch to your home.



Craft Matter Plain warm white  
049106



Craft Matter Plain ash grey  
049107

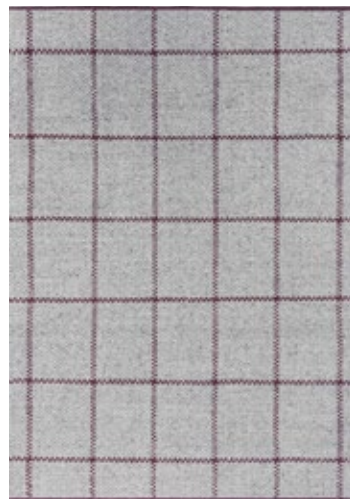
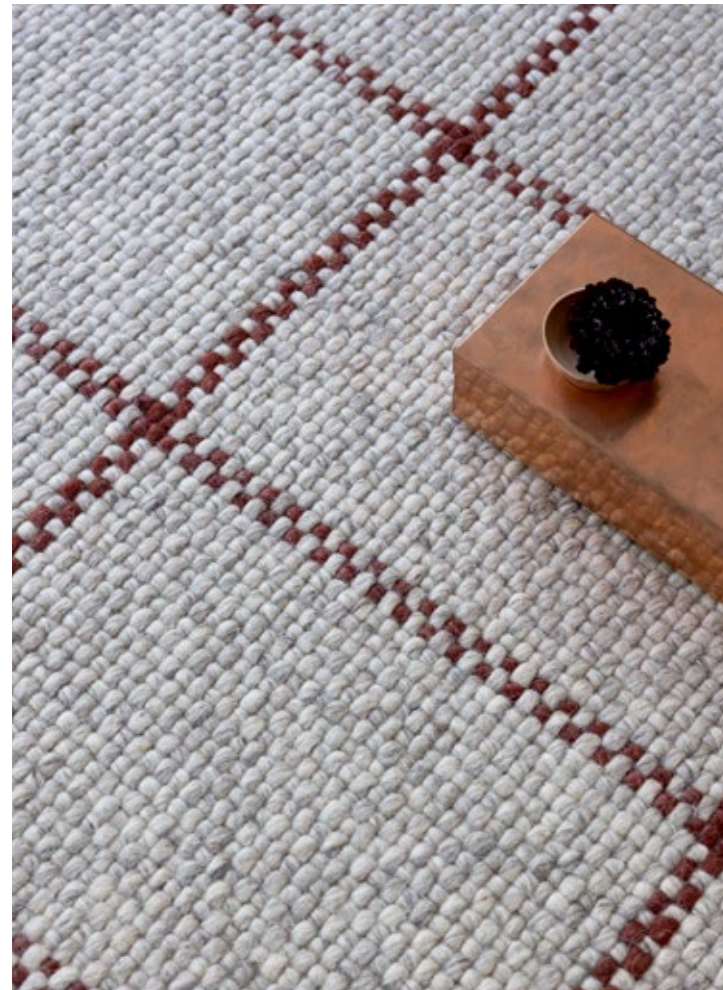
# Craft | Matter check

handwoven  
wool/cotton  
total weight: ca 3200 gr/m<sup>2</sup>  
no pile due to flatweave structure

available sizes:  
140 x 200 4'7" x 6'7"  
160 x 230 5'3" x 7'6"  
200 x 280 6'7" x 9'2"  
250 x 350 8'2" x 11'6"  
no custom sizes

reversible

Discover the timeless charm of our handcrafted creations, where tradition meets artistry in every fiber. Embracing the beauty of irregularity, no two pieces are the same, making each item a unique masterpiece. The series MATTER is a double weave, the back is made of cotton, the top features a basketweave in a window pane pattern made from undyed and dyed wool. The small borders are woven in a contrasting colour in cotton.



Craft Matter Check  
ash-stone red 049100



Craft Matter Check slate-olive  
049104



Craft Matter Check slate-olive 049104

# Atelier | Twill

handwoven  
pure new wool  
total weight: ca 2500 gr/m<sup>2</sup>  
no pile due to flatweave structure

available sizes:  
140 x 200 4'7" x 6'7"  
160 x 230 5'3" x 7'6"  
200 x 280 6'7" x 9'2"  
250 x 350 8'2" x 11'6"  
custom sizes on request

reversible

Discover the rustic charm of our series ATELIER, woven by talented craftsmen in a double-weave technique. Featuring a classical pattern and elegant fringes, each rug translates timeless simplicity into your home decor. The herringbone design adds a touch of sophistication while maintaining a modest style that complements any space.



**Atelier Twill oyster**  
049201



**Atelier Twill honey**  
049206



**Atelier Twill mineral**  
049207

# Artisan | Stack

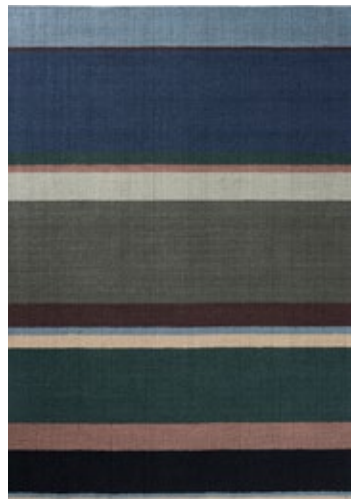
handloom  
pure new wool  
total weight: ca 4000 gr/m<sup>2</sup>  
pile weight: ca 2700 gr/m<sup>2</sup>  
no pile due to flatweave structure

available sizes:  
140 x 200 4'7" x 6'7"  
160 x 230 5'3" x 7'6"  
200 x 280 6'7" x 9'2"  
250 x 350 8'2" x 11'6"  
no custom sizes

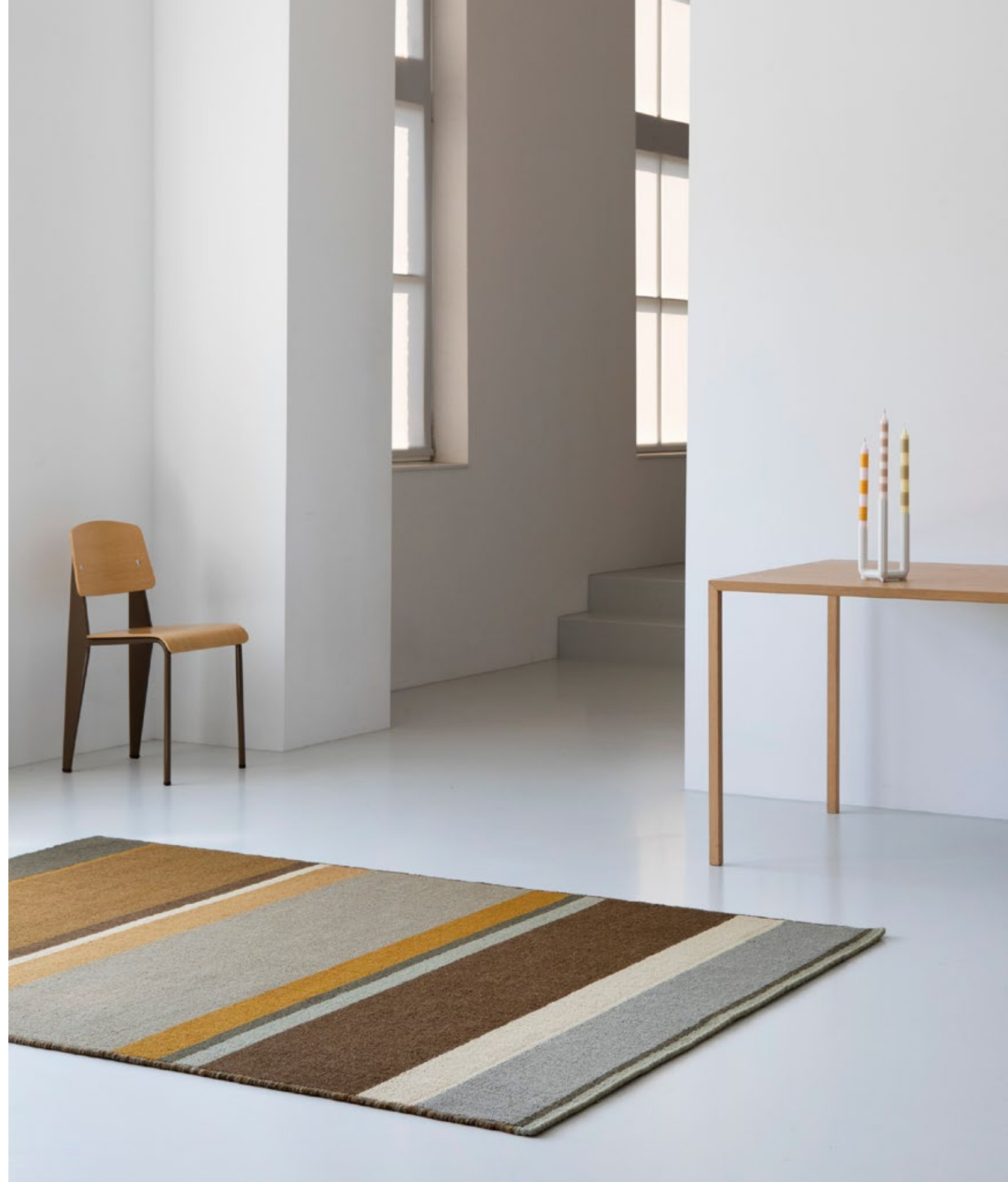
Discover the charm of our artisanal rugs, designed to bring a modern touch to your home. Each rug, carefully crafted with a focus on rib and handweave techniques, showcases the artistry and skill of our weavers. The subdued colours and sturdy wool construction ensure durability, while the play of stripes and lines adds a dynamic element to the design.



**Stack ochre**  
090201



**Stack green**  
090207

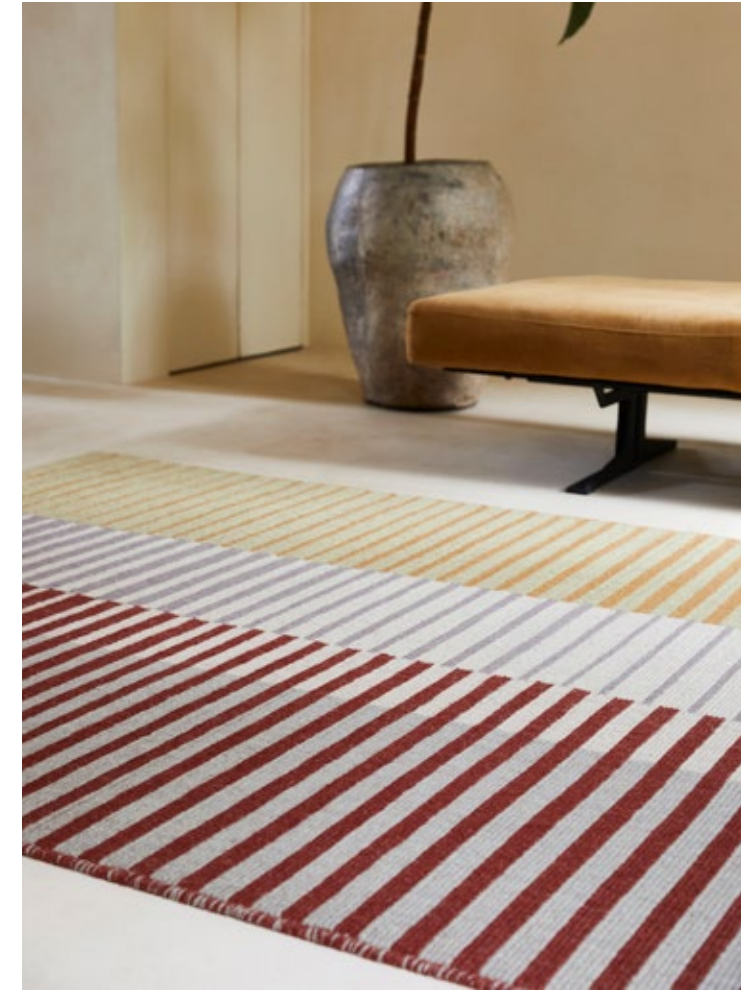


# Artisan | Focus

handloom  
pure new wool  
total weight: ca 4000 gr/m<sup>2</sup>  
pile weight: ca 2700 gr/m<sup>2</sup>  
no pile due to flatweave structure

available sizes:  
140 x 200 4'7" x 6'7"  
160 x 230 5'3" x 7'6"  
200 x 280 6'7" x 9'2"  
250 x 350 8'2" x 11'6"  
custom sizes on request

Discover the charm of our artisanal rugs, designed to bring a modern touch to your home. Each rug, carefully crafted with a focus on rib and handweave techniques, showcases the artistry and skill of our weavers. The subdued colours and sturdy wool construction ensure durability, while the play of stripes and lines adds a dynamic element to the design.



**Artisan Focus dawn**  
096103



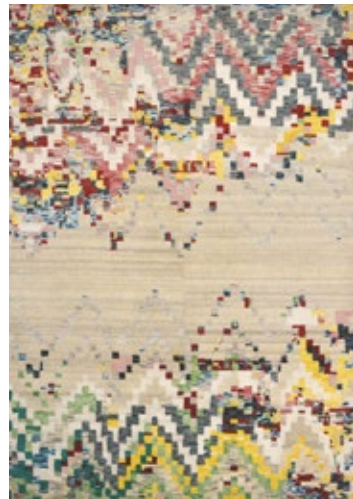
**Artisan Focus dusk**  
096108

# Yeti | Anapurna

handknotted  
pure new wool/viscose  
total weight: ca 4000 gr/m<sup>2</sup>  
pile weight: ca 3400 gr/m<sup>2</sup>  
pile height: ca 9 mm

available sizes:  
140 x 200 4'7" x 6'7"  
170 x 240 5'7" x 7'10"  
200 x 300 6'7" x 9'8"  
250 x 350 8'2" x 11'6"  
custom sizes on request

Introducing our exquisite collection of rugs, where tradition meets luxury. Each piece in our collection is intricately hand-knotted by skilled artisans, ensuring unparalleled quality and attention to detail. Crafted with pure new wool and accented with viscose, these rugs boast a timeless design that enhances any space.



Yeti Anapurna  
051901



Yeti Anapurna  
051904







# Design Studio

Every company has its own unique formula that defines its identity and operations, and naturally, this formula is kept secret. However, we can reveal one of our key ingredients: our highly esteemed design studio. All Brink & Campman rugs are crafted in our design studio, which we proudly consider the heart of our company.

We have a deep passion for colour and texture. Inspired by modernistic aesthetics, the diverse qualities of yarns, nature, and cosmopolitan living, we infuse our designs with fun and playfulness or the most beautiful renditions of nature. Optimistic colours, subdued evergreens, bold patterns, graphic repeats, we like to show collections that explore all borders of the design world in our own unique way.

During the design process, the highly experienced designers work with great passion and creativity, while always keeping an eye on craftsmanship, quality, and sustainability. We believe that only through collaboration, along with our knowledge and expertise, we can achieve the high-quality rugs we love to create.

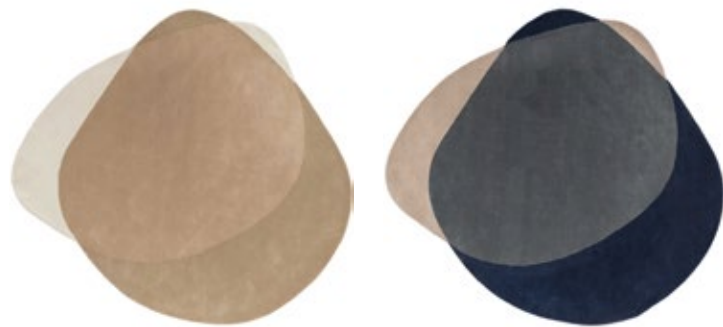
Our commitment to releasing a new collection every year provides us with both the opportunity and the challenge to continually develop, innovate, and improve.

# Element | Arp

handtufted  
pure new wool  
total weight: ca 3800 gr/m<sup>2</sup>  
pile weight: ca 2500 gr/m<sup>2</sup>  
pile height: ca 9 mm

available sizes:  
160 x 175 5'3" x 5'9"  
200 x 220 6'7" x 7'3"  
233 x 255 7'8" x 8'4"  
250 x 274 8'2" x 9'0"  
custom sizes on request

Introducing the ELEMENT series: a stunning collection of three uniquely shaped rugs existing of intertwining forms in attractive, subdued colours that seamlessly blend into any space. These beautifully curved carpets can serve as striking focal points or elegantly define your sitting or lounge area — it's your choice!



Element Arp natural  
087601

Element Arp blue  
087608





# Element | Chad

handtufted  
pure new wool  
total weight: ca 3800 gr/m<sup>2</sup>  
pile weight: ca 2500 gr/m<sup>2</sup>  
pile height: ca 9 mm

available sizes:  
140 x 165 4'7" x 5'5"  
160 x 188 5'3" x 6'2"  
204 x 240 6'8" x 7'10"  
250 x 294 8'2" x 9'8"  
custom sizes on request

Introducing the ELEMENT series: a stunning collection of three uniquely shaped rugs existing of intertwining forms in attractive, subdued colours that seamlessly blend into any space. These beautifully curved carpets can serve as striking focal points or elegantly define your sitting or lounge area — it's your choice!



**Element Chad brown-blue**  
087705



**Element Chad grey-green**  
087704

# Element | Moore

handtufted  
pure new wool  
total weight: ca 3800 gr/m<sup>2</sup>  
pile weight: ca 2500 gr/m<sup>2</sup>  
pile height: ca 9 mm

available sizes:  
140 x 184 4'7" x 6'0"  
160 x 210 5'3" x 6'11"  
190 x 250 6'3" x 8'2"  
250 x 330 8'2" x 10'10"  
custom sizes on request

Introducing the ELEMENT series: a stunning collection of three uniquely shaped rugs existing of intertwining forms in attractive, subdued colours that seamlessly blend into any space. These beautifully curved carpets can serve as striking focal points or elegantly define your sitting or lounge area — it's your choice!



**Element Moore caramel**  
087801



**Element Moore moss**  
087807



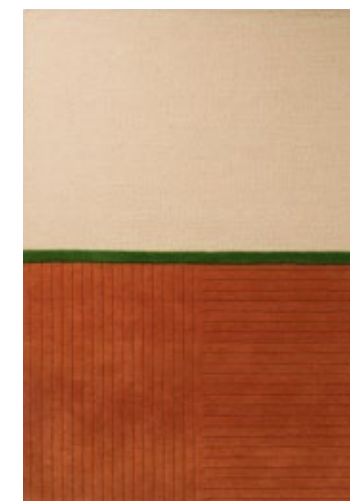
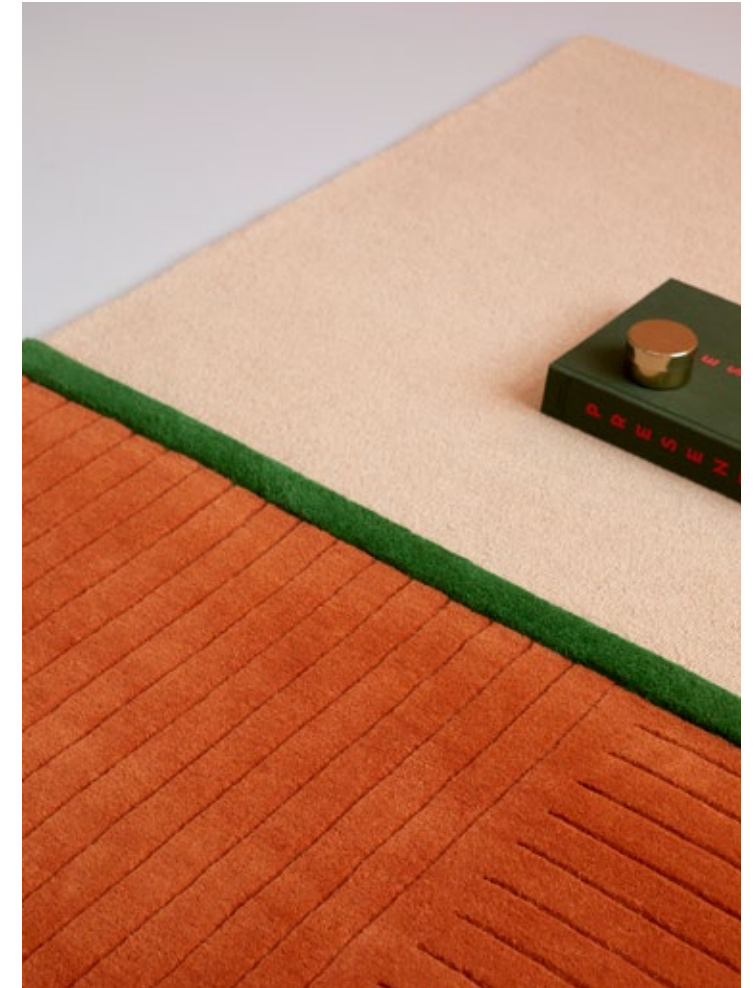


# Decor | Rhythm & State

handtufted  
**rhythm** pure new wool  
**state** pure new wool/viscose  
total weight: ca 4500 gr/m<sup>2</sup>  
pile weight: ca 2500 gr/m<sup>2</sup>  
pile height: ca 12 mm

available sizes:  
140 x 200 4'7" x 6'7"  
160 x 230 5'3" x 7'6"  
200 x 280 6'7" x 9'2"  
250 x 350 8'2" x 11'6"  
custom sizes on request

Step into a world of international interior allure with our playful and colourful rug collection DECOR! Inspired by the vibrant blend of what the world around us offers, these hand-tufted masterpieces are crafted with a lot of attention for detail. Dive into a fun array of bold shapes, vivid patterns, and eye-catching contrasts that bring your space to life.



**Decor Rhythm tangerine**  
098003



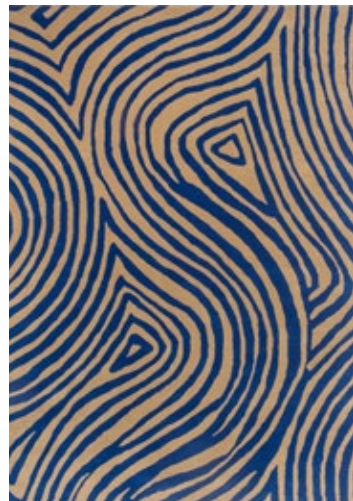
**Decor State soft green**  
097107

# Decor | Groove

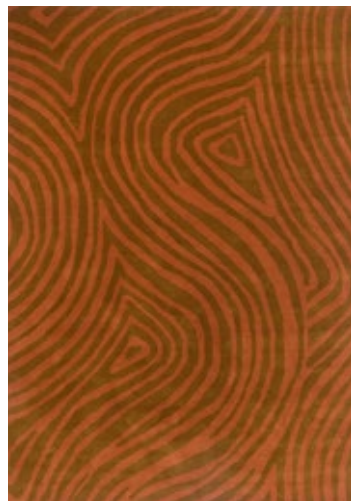
handtufted  
pure new wool  
total weight: ca 4500 gr/m<sup>2</sup>  
pile weight: ca 2500 gr/m<sup>2</sup>  
pile height: ca 12 mm

available sizes:  
140 x 200 4'7" x 6'7"  
160 x 230 5'3" x 7'6"  
200 x 280 6'7" x 9'2"  
250 x 350 8'2" x 11'6"  
custom sizes on request

Step into a world of international interior allure with our playful and colourful rug collection DECOR! Inspired by the vibrant blend of what the world around us offers, these hand-tufted masterpieces are crafted with a lot of attention for detail. Dive into a fun array of bold shapes, vivid patterns, and eye-catching contrasts that bring your space to life.



**Decor Groove electric blue**  
097708



**Decor Groove burnt orange**  
097703



# Decor | Flow

handtufted  
pure new wool  
total weight: ca 4500 gr/m<sup>2</sup>  
pile weight: ca 2500 gr/m<sup>2</sup>  
pile height: ca 12 mm

available sizes:  
140 x 200 4'7" x 6'7"  
160 x 230 5'3" x 7'6"  
200 x 280 6'7" x 9'2"  
250 x 350 8'2" x 11'6"  
custom sizes on request

Step into a world of international interior allure with our playful and colourful rug collection DECOR! Inspired by the vibrant blend of what the world around us offers, these hand-tufted masterpieces are crafted with a lot of attention for detail. Dive into a fun array of bold shapes, vivid patterns, and eye-catching contrasts that bring your space to life.



**Decor Flow soft sand**  
091309



**Decor Flow caviar**  
091305

# Decor | Riff

handtufted  
pure new wool  
total weight: ca 4500 gr/m<sup>2</sup>  
pile weight: ca 2500 gr/m<sup>2</sup>  
pile height: ca 12 mm

available sizes:  
140 x 200 4'7" x 6'7"  
160 x 230 5'3" x 7'6"  
200 x 280 6'7" x 9'2"  
250 x 350 8'2" x 11'6"  
custom sizes on request

Step into a world of international interior allure with our playful and colourful rug collection DECOR! Inspired by the vibrant blend of what the world around us offers, these hand-tufted masterpieces are crafted with a lot of attention for detail. Dive into a fun array of bold shapes, vivid patterns, and eye-catching contrasts that bring your space to life.



**Decor Riff straw yellow**  
098206



**Decor Riff water blue**  
098208



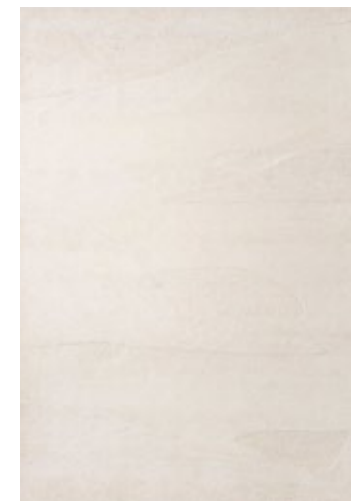
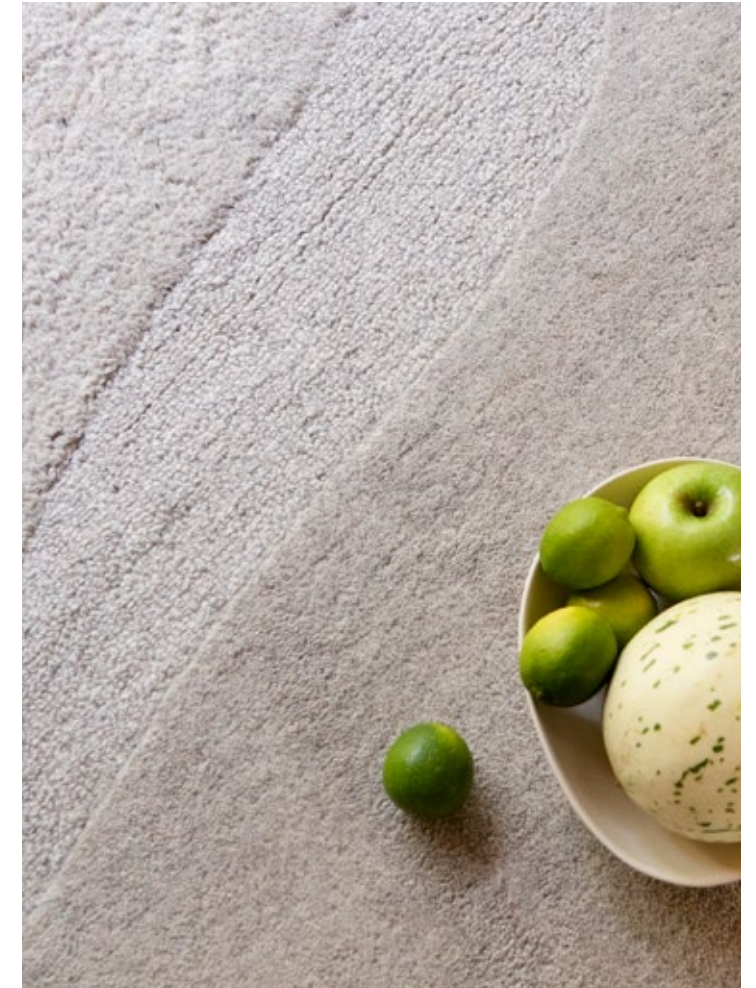


# Decor | Scape

handtufted  
pure new wool  
total weight: ca 4500 gr/m<sup>2</sup>  
pile weight: ca 2500 gr/m<sup>2</sup>  
pile height: ca 12 mm

available sizes:  
140 x 200 4'7" x 6'7"  
160 x 230 5'3" x 7'6"  
200 x 280 6'7" x 9'2"  
250 x 350 8'2" x 11'6"  
custom sizes on request

Step into a world of international interior allure with our playful and colourful rug collection DECOR! Inspired by the vibrant blend of what the world around us offers, these hand-tufted masterpieces are crafted with a lot of attention for detail. Dive into a fun array of bold shapes, vivid patterns, and eye-catching contrasts that bring your space to life.



**Decor Scape wool white**  
095001



**Decor Scape natural grey**  
095004

# Decor | Primi & Plateau

handtufted  
pure new wool  
total weight: ca 4500 gr/m<sup>2</sup>  
pile weight: ca 2500 gr/m<sup>2</sup>  
pile height: ca 12 mm

available sizes:  
140 x 200 4'7" x 6'7"  
160 x 230 5'3" x 7'6"  
200 x 280 6'7" x 9'2"  
250 x 350 8'2" x 11'6"  
custom sizes on request

Step into a world of international interior allure with our playful and colourful rug collection DECOR! Inspired by the vibrant blend of what the world around us offers, these hand-tufted masterpieces are crafted with a lot of attention for detail. Dive into a fun array of bold shapes, vivid patterns, and eye-catching contrasts that bring your space to life.



**Decor Primi double cream**  
092101



**Decor Plateau moss**  
091907



**Decor Plateau terra**  
091903



# Decor | Miller

handtufted  
pure new wool  
total weight: ca 4500 gr/m<sup>2</sup>  
pile weight: ca 2500 gr/m<sup>2</sup>  
pile height: ca 12 mm

available sizes:  
140 x 200 4'7" x 6'7"  
160 x 230 5'3" x 7'6"  
200 x 280 6'7" x 9'2"  
250 x 350 8'2" x 11'6"  
custom sizes on request

Step into a world of international interior allure with our playful and colourful rug collection DECOR! Inspired by the vibrant blend of what the world around us offers, these hand-tufted masterpieces are crafted with a lot of attention for detail. Dive into a fun array of bold shapes, vivid patterns, and eye-catching contrasts that bring your space to life.



**Decor Miller Spring**  
095108



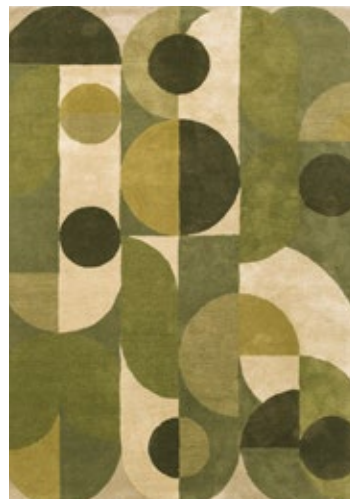
**Decor Miller fall**  
095105

# Decor | Cosmo

handtufted  
pure new wool  
total weight: ca 4500 gr/m<sup>2</sup>  
pile weight: ca 2500 gr/m<sup>2</sup>  
pile height: ca 12 mm

available sizes:  
140 x 200 4'7" x 6'7"  
160 x 230 5'3" x 7'6"  
200 x 280 6'7" x 9'2"  
250 x 350 8'2" x 11'6"  
custom sizes on request

Step into a world of international interior allure with our playful and colourful rug collection DECOR! Inspired by the vibrant blend of what the world around us offers, these hand-tufted masterpieces are crafted with a lot of attention for detail. Dive into a fun array of bold shapes, vivid patterns, and eye-catching contrasts that bring your space to life.



**Decor Cosmo greens**  
095207



**Decor Cosmo red-pale green**  
095203



# Decor | Lola

handtufted  
pure new wool  
total weight: ca 4500 gr/m<sup>2</sup>  
pile weight: ca 2500 gr/m<sup>2</sup>  
pile height: ca 12 mm

available sizes:  
140 x 200 4'7" x 6'7"  
160 x 230 5'3" x 7'6"  
200 x 280 6'7" x 9'2"  
250 x 350 8'2" x 11'6"  
custom sizes on request

Step into a world of international interior allure with our playful and colourful rug collection DECOR! Inspired by the vibrant blend of what the world around us offers, these hand-tufted masterpieces are crafted with a lot of attention for detail. Dive into a fun array of bold shapes, vivid patterns, and eye-catching contrasts that bring your space to life.



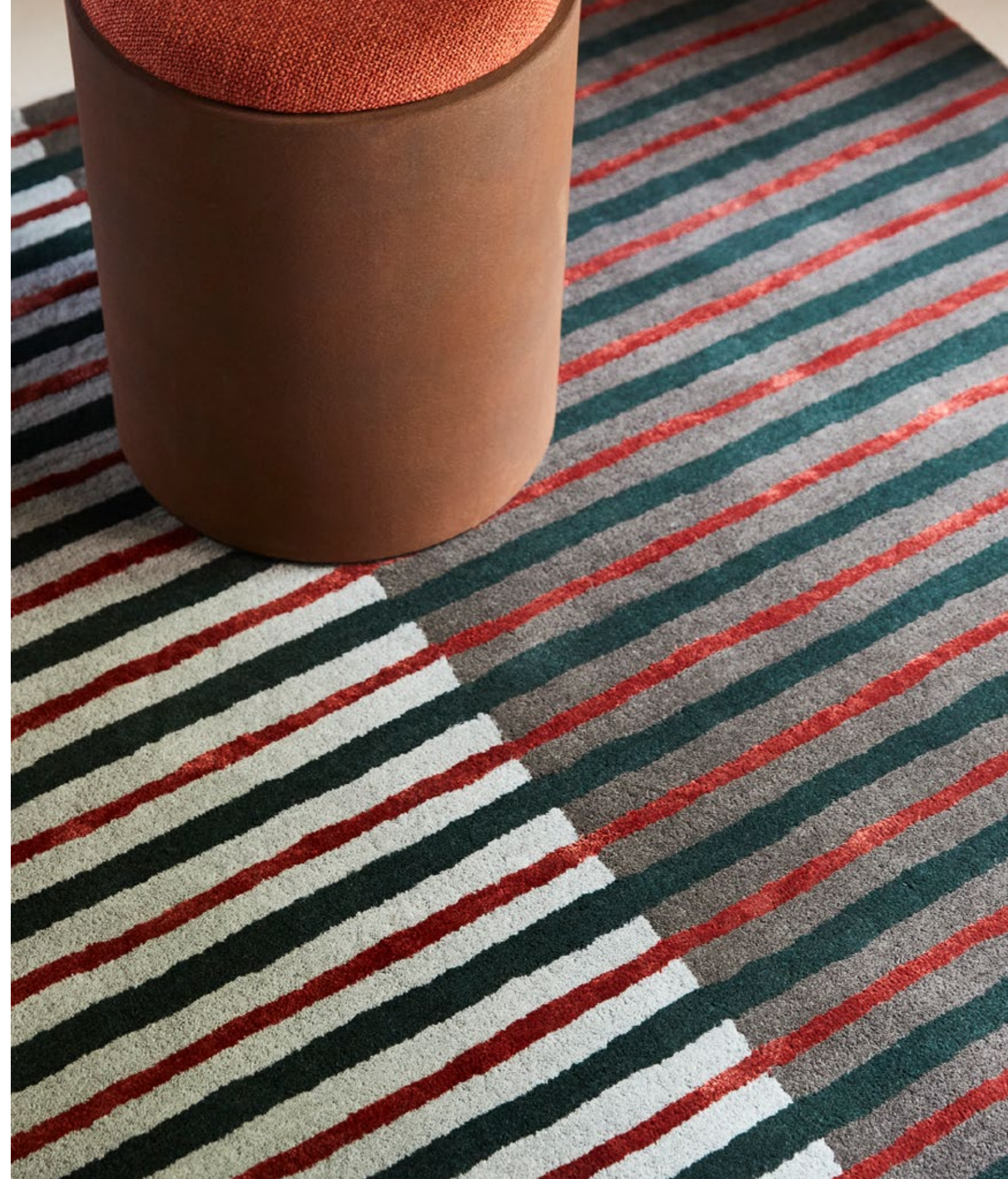
**Decor Lola**  
095403

# Decor | Proof

handtufted  
pure new wool/viscose  
total weight: ca 4500 gr/m<sup>2</sup>  
pile weight: ca 2500 gr/m<sup>2</sup>  
pile height: ca 12 mm

available sizes:  
140 x 200 4'7" x 6'7"  
160 x 230 5'3" x 7'6"  
200 x 280 6'7" x 9'2"  
250 x 350 8'2" x 11'6"  
custom sizes on request

Step into a world of international interior allure with our playful and colourful rug collection DECOR! Inspired by the vibrant blend of what the world around us offers, these hand-tufted masterpieces are crafted with a lot of attention for detail. Dive into a fun array of bold shapes, vivid patterns, and eye-catching contrasts that bring your space to life.



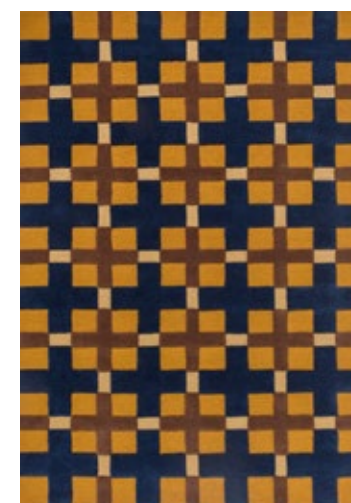
**Decor Proof**  
095907

# Decor | Milano

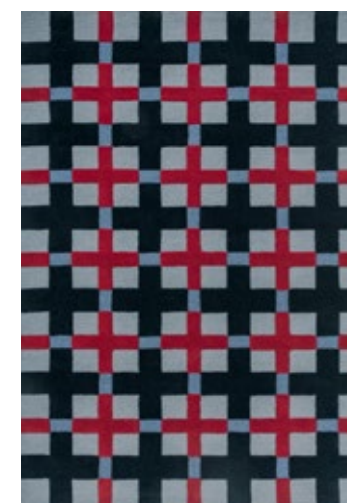
handtufted  
pure new wool  
total weight: ca 4500 gr/m<sup>2</sup>  
pile weight: ca 2500 gr/m<sup>2</sup>  
pile height: ca 12 mm

available sizes:  
140 x 200 4'7" x 6'7"  
160 x 230 5'3" x 7'6"  
200 x 280 6'7" x 9'2"  
250 x 350 8'2" x 11'6"  
custom sizes on request

Step into a world of international interior allure with our playful and colourful rug collection DECOR! Inspired by the vibrant blend of what the world around us offers, these hand-tufted masterpieces are crafted with a lot of attention for detail. Dive into a fun array of bold shapes, vivid patterns, and eye-catching contrasts that bring your space to life.



**Decor Milano golden ochre**  
097806



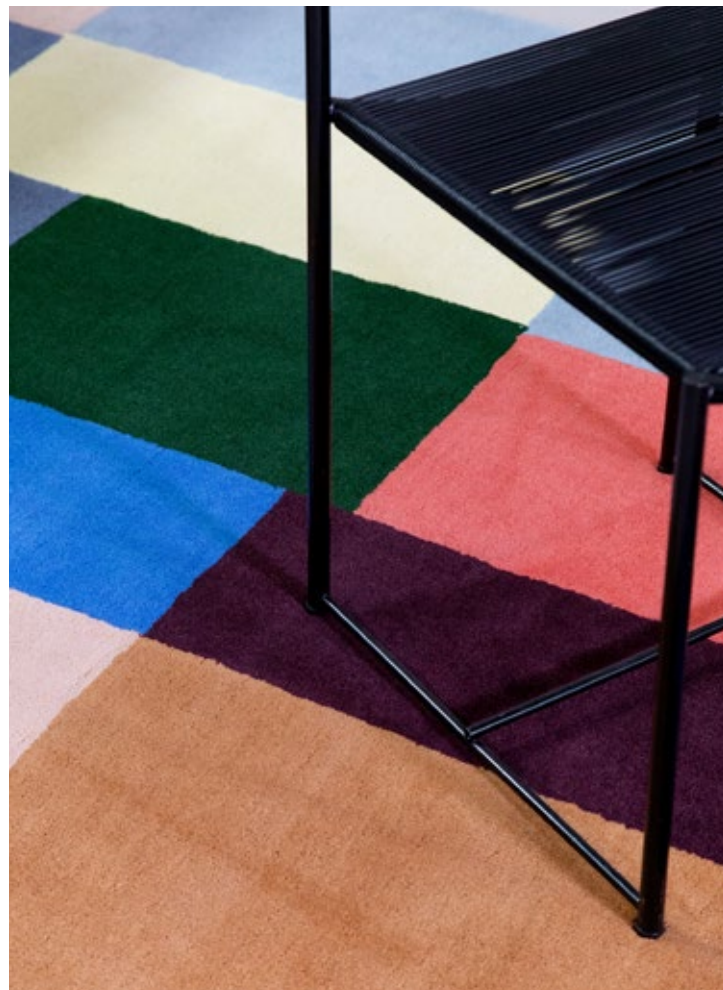
**Decor Milano royal blue**  
097808

# Decor | Bass & Beat

handtufted  
pure new wool  
total weight: ca 4500 gr/m<sup>2</sup>  
pile weight: ca 2500 gr/m<sup>2</sup>  
pile height: ca 12 mm

available sizes:  
140 x 200 4'7" x 6'7"  
160 x 230 5'3" x 7'6"  
200 x 280 6'7" x 9'2"  
250 x 350 8'2" x 11'6"  
custom sizes on request

Step into a world of international interior allure with our playful and colourful rug collection DECOR! Inspired by the vibrant blend of what the world around us offers, these hand-tufted masterpieces are crafted with a lot of attention for detail. Dive into a fun array of bold shapes, vivid patterns, and eye-catching contrasts that bring your space to life.



**Decor Bass silent beige**  
094201



**Decor Beat kaleidoscope**  
094809







# Estella | Domino

handtufted  
pure new wool  
total weight: ca 4500 gr/m<sup>2</sup>  
pile weight: ca 2500 gr/m<sup>2</sup>  
pile height: ca 12 mm

available sizes:  
140 x 200 4'7" x 6'7"  
160 x 230 5'3" x 7'6"  
200 x 280 6'7" x 9'2"  
250 x 350 8'2" x 11'6"  
custom sizes on request

Bring life to your living space with our collection of bright, bold rugs. These hand-tufted masterpieces feature a vivid play of patterns inspired by evergreens, guaranteed to touch up any room and add a splash of personality. Perfect for elevating your home decor, these Estella rugs combine vibrant designs with superior craftsmanship, making them an eye-catching centerpiece in any setting.



**Estella Domino**  
083901

# Estella | Summer & Vases

handtufted  
pure new wool  
total weight: ca 4500 gr/m<sup>2</sup>  
pile weight: ca 2500 gr/m<sup>2</sup>  
pile height: ca 12 mm

available sizes:  
140 x 200 4'7" x 6'7"  
160 x 230 5'3" x 7'6"  
200 x 280 6'7" x 9'2"  
250 x 350 8'2" x 11'6"  
custom sizes on request

Bring life to your living space with our collection of bright, bold rugs. These hand-tufted masterpieces feature a vivid play of patterns inspired by evergreens, guaranteed to touch up any room and add a splash of personality. Perfect for elevating your home decor, these Estella rugs combine vibrant designs with superior craftsmanship, making them an eye-catching centerpiece in any setting.



**Estella Summer**  
085200



**Estella Vases**  
089502





# Estella | Submarine

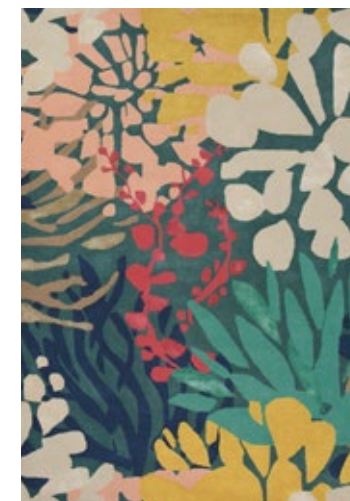
handtufted  
pure new wool/viscose  
total weight: ca 4500 gr/m<sup>2</sup>  
pile weight: ca 2500 gr/m<sup>2</sup>  
pile height: ca 12 mm

available sizes:  
140 x 200 4'7" x 6'7"  
160 x 230 5'3" x 7'6"  
200 x 280 6'7" x 9'2"  
250 x 350 8'2" x 11'6"  
custom sizes on request

Bring life to your living space with our collection of bright, bold rugs. These hand-tufted masterpieces feature a vivid play of patterns inspired by evergreens, guaranteed to touch up any room and add a splash of personality. Perfect for elevating your home decor, these Estella rugs combine vibrant designs with superior craftsmanship, making them an eye-catching centerpiece in any setting.



**Estella Submarine**  
089405



**Estella Submarine**  
089408



# Brands

In addition to our unique Brink & Campman collection, we develop and produce collections for globally renowned brands in the home interior and fashion world.

Our design studio collaborates closely with the designers of these brands to create highly recognizable and distinctive collections. Each brand possesses its own unique style and undergoes individual developments, which keeps us motivated to craft the most beautiful and innovative collections. This cooperation ensures that we can proudly offer a wide range of rugs, where quality and attention to detail are key.

At Brink & Campman, quality is not just a word; it is a promise. Our rugs are made with the finest materials and meticulous craftsmanship, ensuring durability and timeless beauty. Whether it is the softness of high-grade wool, the versatile appeal of cotton, or the luster of viscose, every material is chosen with care to meet the highest standards of quality.

Explore our extensive range of rugs and experience the unparalleled quality and exquisite designs. Whether you are looking for a statement piece or a subtle accent, our collections offer something for every taste and style.

# Laura Ashley



**Cleavers natural round**  
080901



**Cleavers seaspray round**  
080908



**Cleavers duck egg round**  
080907



**Cleavers dark steel round**  
080904



**Cleavers natural**  
080901



**Cleavers seaspray**  
080908



**Cleavers duck egg**  
080907



**Cleavers dark steel**  
080904



**Gosford cranberry**  
081300



**Gosford cranberry round**  
081300



**Tulips china blue**  
082208

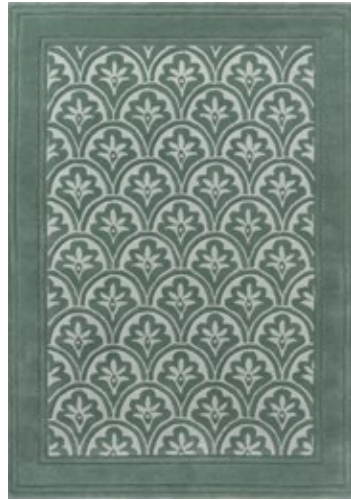


**Parterre sage**  
081707





**Catarina gold**  
080806



**Catarina fern**  
080807



**Eaton seaspray**  
081008



**Eaton charcoal**  
081004



**Redbrook midnight**  
081808



**Redbrook midnight round**  
081808



**Rye natural**  
081901



**Rye sage**  
081907



**Redbrook silver**  
081804



**Redbrook silver round**  
081804



**Redbrook blush**  
081802



**Redbrook blush round**  
081802



**Josette dove grey**  
081401



**Newborough steel**  
081604



**Newborough pale gold**  
081606



**Newborough dark seaspray**  
081608



**Redbrook hazelnut**  
081801



**Redbrook hazelnut round**  
081801



**Redbrook duck egg**  
081807



**Redbrook duck egg round**  
081807



**Mari mineral green**  
081507



**Silchester dove grey**  
081101



**Silchester pale sage**  
081107

# Morris & Co



**Bower twining vine green**  
128207



**Bower indigo**  
128208



**Bird tump green**  
128307



**Bird webb's blue**  
128308



**Trent red house**  
127503



**Trent madder red-webb's blue**  
127510



**Bluebell leafy arbour green**  
127607



**Elmcote gold**  
127806



**Pimpernel indigo**  
028818



**Pimpernel bullrush**  
028808



**Pimpernel aubergine**  
028805



**Pure Pimpernel linen**  
028701



**Seaweed teal**  
127008



**Seaweed ink**  
028008



**Artichoke amber-charcoal**  
127103



**Artichoke mineral**  
127108



**Strawberry Thief crimson**  
027700



**Strawberry Thief indigo**  
027708



**Strawberry Thief slate**  
027718



**Pure Strawberry Thief ink**  
028105



**Acanthus forest**  
126900



**Snakeshead indigo**  
127208



**Wilhelmina linen-mustard**  
127401



# Sanderson



Ancient Canopy fawn-olive-green 146701



Ancient Canopy forest green 146708



Foraging indigo 146618



Foraging indigo round 146618



Anthea china blue 047107



Rain Forest tropical nights 050708



Woodland Glade linen-russet-brown 146801



Woodland Glade gold 146806



Woodland Glade damson red 146800



Forest of Dean forest green 146907





Amanpuri stone  
145101



Amanpuri grey-plum  
145104



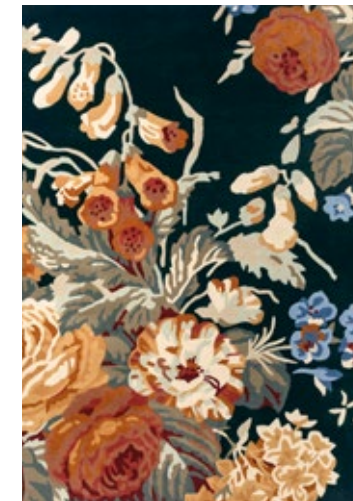
Cantaloupe ochre  
145206



Elsdon linden  
044006



Abstract linden-silver  
045401



Stapleton Park navy-burnt  
orange 045318



Stapleton Park rosewood  
045302



Robin's Wood russet brown  
146501



Robin's Wood russet brown  
round 146501



Robin's Wood forest green  
146508



Robin's Wood forest green  
round 146508



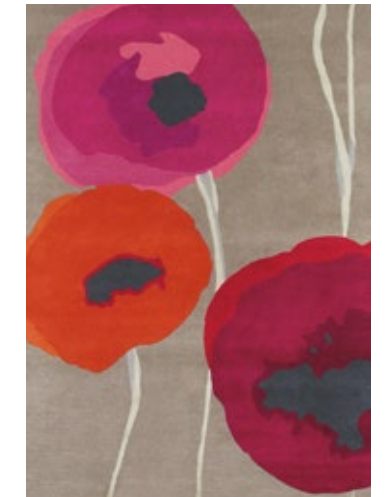
Dahlia & Rosehip teal  
050608



Rose & Peony cerise  
045005



Manila green  
046407



Poppies red-orange  
045700

# Orla Kiely



Sunflower olive  
060007



Sunflower yellow  
060006



Sunflower pink  
060005



Sprig Stem paprika  
063900



Sprig Stem marine  
063908



Solid Stem ecru  
158309



Solid Stem fern  
158307



Wild Rose fawn  
159605



Striped Tulip seagrass  
160307



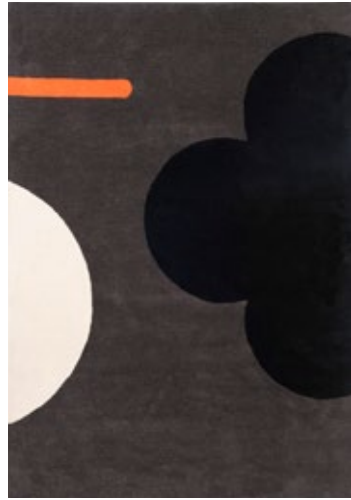
Multi Stem autumn  
059503



Puzzle Flower slate  
060905



**Geo Flower denim**  
060608



**Geo Flower graphite**  
060605



**Optical Flower dandelion**  
061206



**Optical Flower teal**  
061207



**Stem black**  
059803



**Cut Stem multi**  
061405



**Giant Linear Stem**  
059404



**Giant Multi Stem**  
059205



**Classic Multi Stem**  
059505



**Multi Stem kingfisher**  
059507



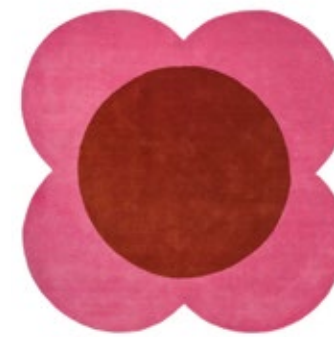
**Linear Stem slate**  
060505



**Spot Flower multi**  
060404



**Flower Spot ecru-black**  
158409



**Flower Spot pink-red**  
158400



**Flower Spot chestnut-violet**  
158401



# Wedgwood



**Folia 2.0 mink round**  
038902



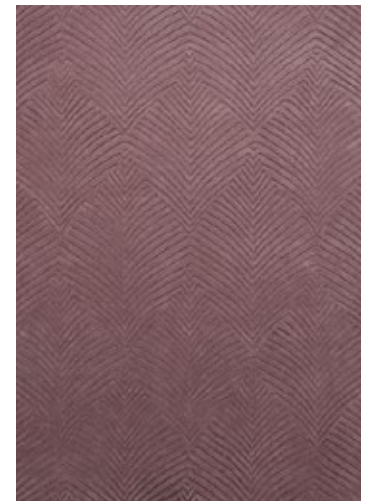
**Folia 2.0 cool grey round**  
038904



**Folia stone round**  
038301



**Folia grey round**  
038305



**Folia 2.0 mink**  
038902



**Folia 2.0 cool grey**  
038904



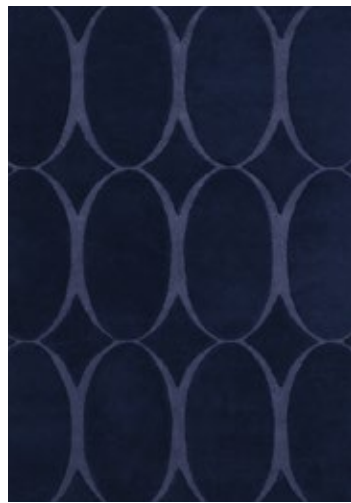
**Folia stone**  
038301



**Folia grey**  
038305



**Renaissance beige**  
039001



**Renaissance blue**  
039008



**Arris grey**  
037304



**Arris teal**  
037307



**Hummingbird grey**  
037804



**Hummingbird blue**  
037808



**Hummingbird navy**  
037818



**Paeonia coral**  
037902



**Wild Strawberry tonal**  
038201



**Fabled Floral grey**  
037504



**Fabled Floral navy**  
037508



**Tonquin blue**  
037008



**Tonquin charcoal**  
037005



**Wild Strawberry cream**  
038108



**Waterlily midnight pond**  
038608



**Waterlily midnight pond round**  
038608



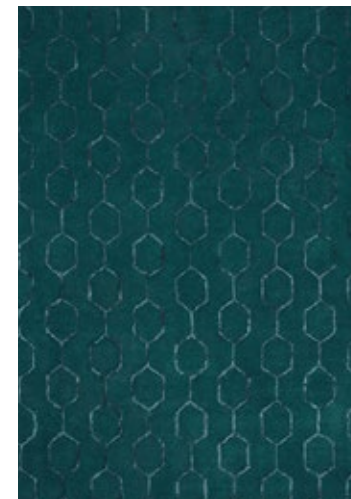
**Waterlily dusty rose**  
038602



**Waterlily dusty rose round**  
038602



**Gio mineral**  
039108



**Gio teal**  
039107



**Gio noir**  
039105

# Ted Baker



Shaped Magnolia light pink  
162302



Shaped Magnolia burgundy  
162303



Linear Floral blue  
162508



Feathers natural  
162404



Landscape Toile light pink  
162602



Landscape Toile light blue  
162608



Baroque yellow  
162906



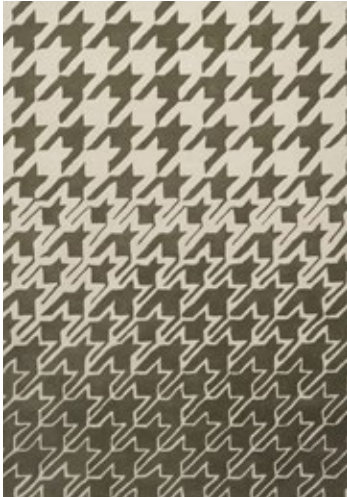
Baroque pink  
162902



Woodblock grey  
163001



Woodblock red  
163003



Houndstooth grey  
162804



Houndstooth dark blue  
162808



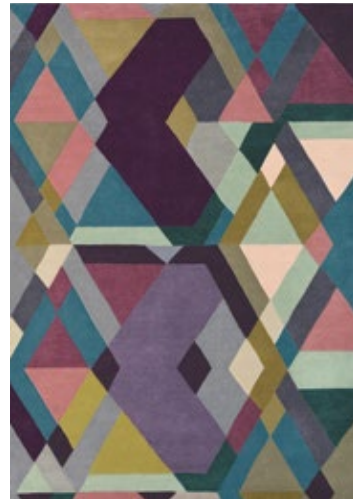
**Plaid grey**  
057804



**Kinmo pink**  
056802



**Kinmo green**  
056807



**Mosaic light purple**  
057605



**Masquerade blue**  
160008



**Masquerade blue round**  
160008



**Jardin pink**  
160902



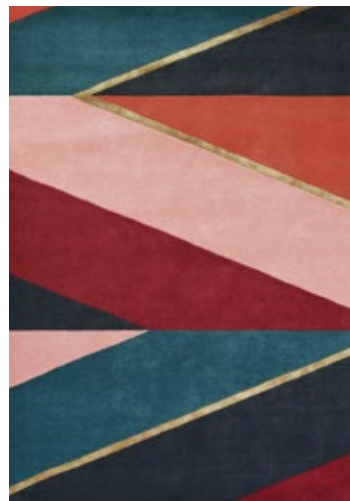
**Jardin blue**  
160908



**Sahara pink**  
056102



**Sahara pink round**  
056102



**Sahara burgundy**  
056105



**Sahara burgundy round**  
056105



**Zodiac Aries**  
161105



**Zodiac Taurus**  
161205



**Zodiac Gemini**  
161305



**Zodiac Cancer**  
161405



**Zodiac Leo**  
161505



**Zodiac Virgo**  
161605



**Zodiac Libra**  
161705



**Zodiac Scorpio**  
161805



**Zodiac Sagittarius**  
161905



**Zodiac Capricorn**  
162005



**Zodiac Aquarius**  
162105



**Zodiac Pisces**  
162205



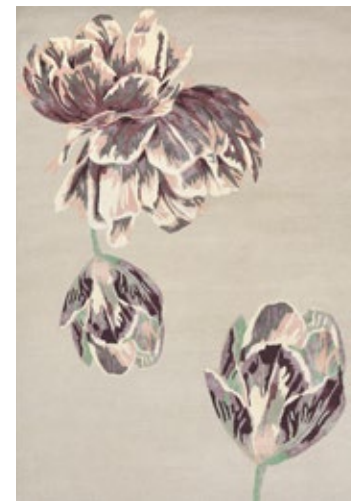
**Romantic Magnolia cream**  
162701



**Romantic Magnolia pink**  
162702



**Romantic Magnolia dark blue**  
162708



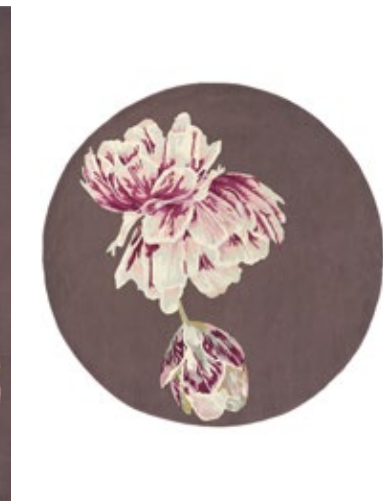
**Tranquility beige**  
056001



**Tranquility beige round**  
056001



**Tranquility aubergine**  
056005



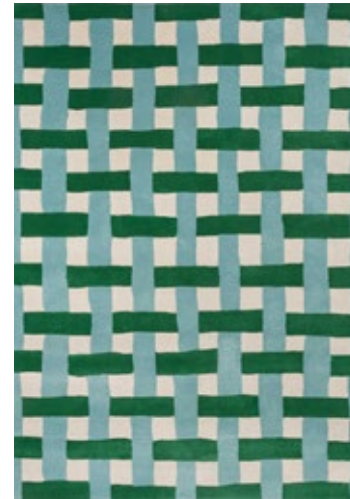
**Tranquility aubergine round**  
056005



# Harlequin



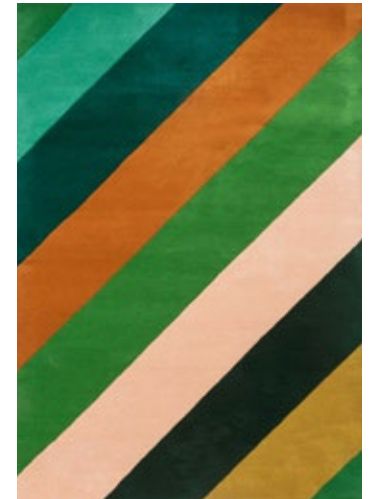
Basketweave coral-rose  
144102



Basketweave emerald-aquamarine  
144107



Paper Straw peridot  
144317



Sherbet Stripe emerald/amber  
144417



Wilderness peridot-emerald  
144507



Wonderland Floral amber-lapis  
144713



Foresta pebble-sand  
143511



Foresta rosewood-huckleberry  
143503



Floreale maize  
044906



Floreale fuchsia  
044905



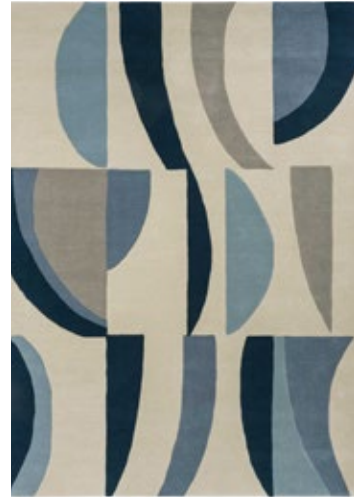
Dahlia coral-wilderness  
142408



Dahlia fuchsia-palm  
142402



**Torillo emerald-azul**  
143907



**Torillo sky-cornflower**  
143908



**Torillo cornflower-walnut**  
143905



**Bodega stone**  
040504



**Popova caramel-slate-shell**  
143101



**Elliptic emerald**  
140307



**Kelapa zest**  
040307



**Melora positano-succulent-gold**  
142702



**Blocks fern**  
141907



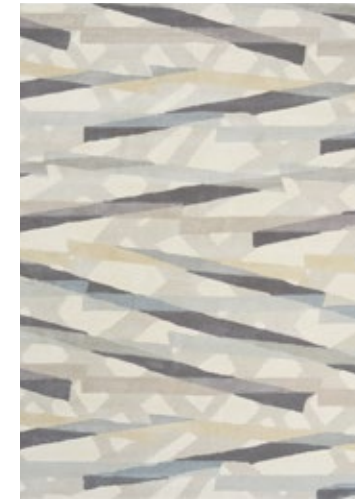
**Blocks slate**  
141904



**Shore truffle**  
040605



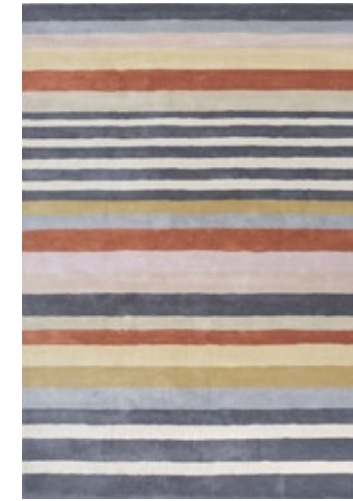
**Calla pomegranate/clementine**  
143403



**Diffinity oyster**  
140001



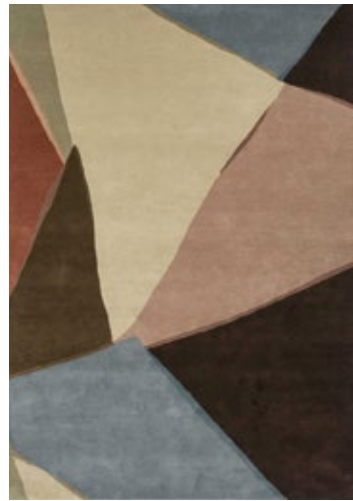
**Diffinity topaz**  
140006



**Rosita harissa**  
140402



**Rosita putty**  
140404



**Sumi Reflect cornflour-spice**  
143705



**Sumi Reflect fern-pistachio**  
143717



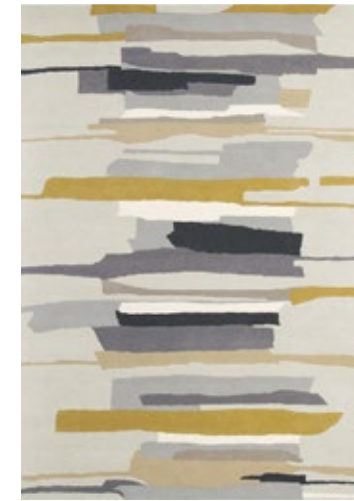
**Calathea shiitake-wild water**  
142905



**Calathea amber-brazilian rosewood** 142907



**Rhytm saffron**  
040906



**Zeal pewter**  
043004



**Yassuni cerise**  
040405



# Scion



**Orto frost**  
125404



**Orto citrus**  
125406



**Orto rust**  
125400



**Poppy Pop parchment-gecko**  
124807



**Poppy Pop sage-poppy**  
124800



**Stipa denim**  
126408



**Stipa forest**  
126407



**Ride the Wave denim**  
125608



**Ride the Wave liquorice**  
125605



**Ferns juniper**  
125907



**Jackfruit and the beanstalk  
chai-sage** 125706



**Leopard Dots pebble-sage**  
125206



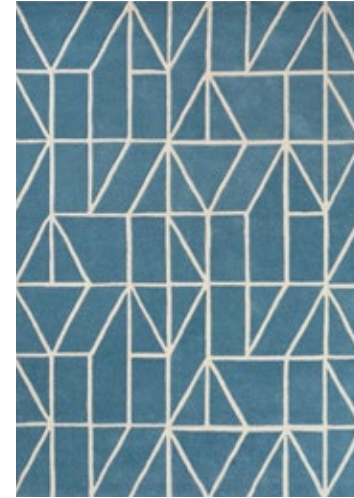
**Epsilon charcoal**  
023801



**Uteki slate**  
023604



**Oxalis juniper**  
025507



**Viso denim**  
024008



**Mr Fox pebble-denim**  
025328



**Mr Fox mint-poppy**  
025313



**Mr Fox silver**  
025304



**Composition amber**  
023701



**Composition papaya**  
023706



**Kelda cobalt**  
023508



**Lintu dandelion**  
024405



**Mr Fox cinnamon**  
025303



**Mr Fox mustard**  
025306



**Mr Fox aqua**  
025308



**Mr Fox denim**  
025318



**Raita taupe**  
024701



**Kaleido pop**  
026000



**Lohko honey**  
025806



**Spike marine**  
026808

# Florence Broadhurst



Tortoiseshell stripe jade  
039808



Japanese bamboo jade  
039507



Turnabouts black  
039205



Turnabouts claret  
039200



Japanese Fans ivory  
039301



Japanese Fans gold  
039305



Floral 300 charcoal  
039604



Floral 300 poppy  
039600



Japanese Floral oyster  
039701



Japanese Floral midnight  
039708



Waterwave Stripe citron  
039906



Waterwave Stripe pearl  
039908



Slub mist  
039401



Slub charcoal  
039405

# Brink & Campman Collection Overview '25

## Jazz



## Ray



## Spring



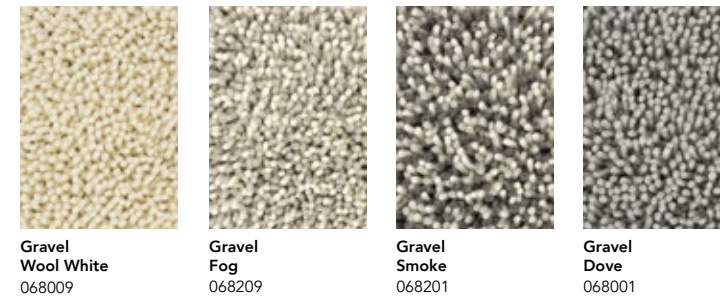
## Young



## Origin



## Gravel



## Arch



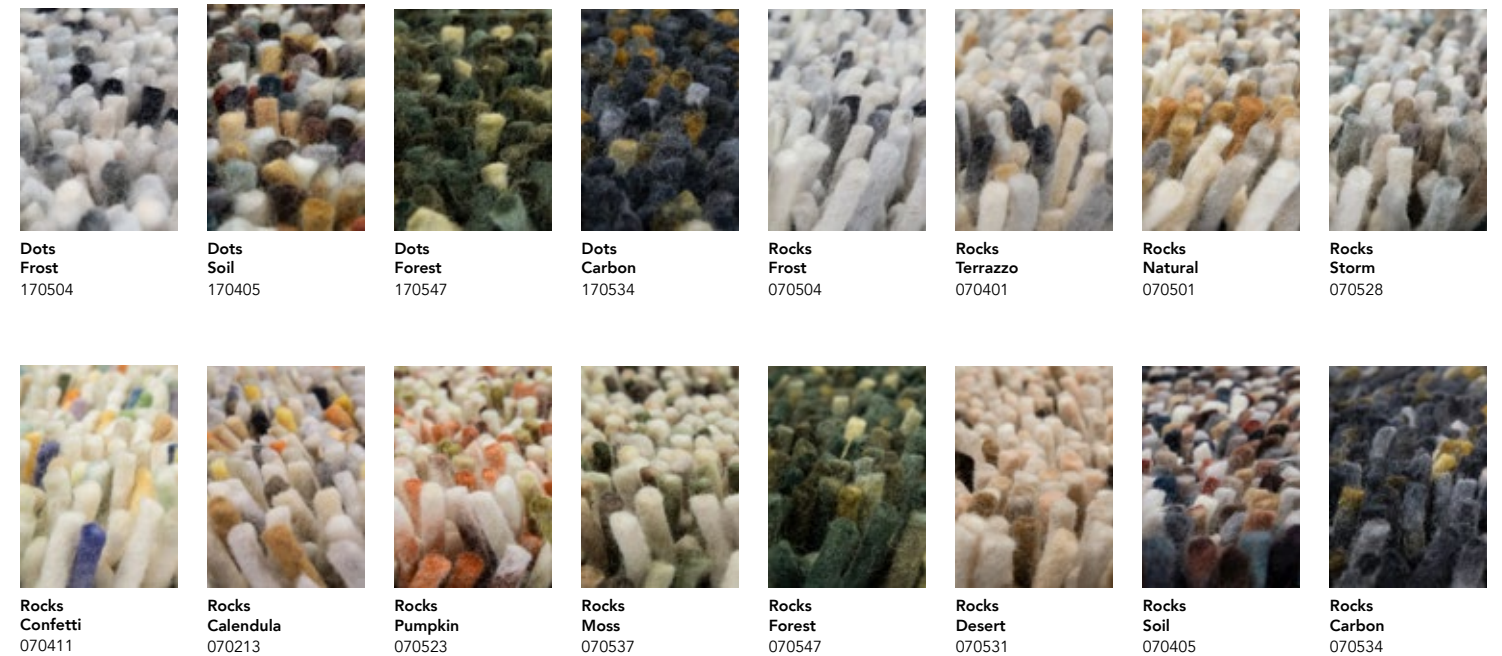
## Pop Art



## Dots



## Rocks



**Twinset Urban**

	 Twinset Urban Taupe 022101	 Twinset Urban Antique 022106	 Twinset Urban Shiitake 022134
	 Twinset Urban Tan 022152	 Twinset Urban Golden 022116	 Twinset Urban Graphite 022135
	 Twinset Urban Silver 022131	 Twinset Urban Olive 022107	



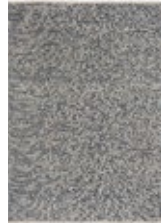
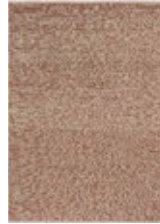
Twinset Urban  
Oyster  
022104

**Twinset Terrain**

	 Twinset Terrain Oyster 121704	 Twinset Terrain Silver 121731	 Twinset Terrain Olive 121707
	 Twinset Terrain Taupe 121701	 Twinset Terrain Antique 121706	 Twinset Terrain Graphite 121735
	 Twinset Terrain Tan 121752	 Twinset Terrain Golden 121716	

Twinset Terrain  
Shiitake  
121734

**Nest**

			
---	---	---	---

Frame  
Leaf  
129307

Frame  
Brick  
129300

Nest  
Ink  
129428

Nest  
Leather  
129403

**Bond**

	
---	---

Bond  
Ash  
129604

Bond  
Moss  
129617

**Pebble**

	
---	---

Pebble  
Light Natural  
129811


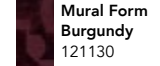

Pebble  
Natural  
129801

**Twinset Shore**

	 Twinset Shore Oyster 121604	 Twinset Shore Silver 121631	 Twinset Shore Shiitake 121634
	 Twinset Shore Taupe 121601	 Twinset Shore Antique 121606	 Twinset Shore Graphite 121635
	 Twinset Shore Tan 121652	 Twinset Shore Golden 121616	

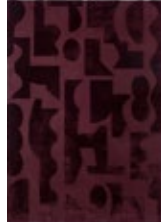


Twinset Shore  
Olive  
121607

**Mural Form**

	 Mural Form Burgundy 121130	 Mural Form Cement 121134
---	--	---

Mural Form  
Forest  
121107

**Mural Modest**

	 Mural Modest Forest 121117	 Mural Modest Cement 121114
---	---	---

Mural Modest  
Burgundy  
121100

**Marble**

							
---	---	---	---	---	---	---	---

Pebble  
Frost  
129804

Pebble  
Moss  
129837

Pebble  
Pumpkin  
129823

Marble  
Weather  
029501


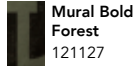
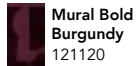
Marble  
Calendula  
029503

Marble  
Acid  
029517

Marble  
Storm  
029528

Marble  
Moss  
029537

**Mural Bold**

	 Mural Bold Forest 121127	 Mural Bold Burgundy 121120
---	---	---

Mural Bold  
Cement  
121104

**Shade Low**

					
--	--	--	---	--	--

Shade Low  
Silver-Polar night  
010104

Shade Low  
Beige-Dark Chocolate  
010101




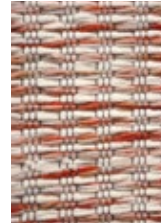


Shade Low  
Umber-Tobacco  
010103

Shade Low  
Olive-Deep Forest  
010107

Shade Low  
Brass-Indigo  
010108

Shade Low  
Plum-Fig  
010100

**Grain**

							
--	--	--	--	--	--	--	--

Marble  
Pumpkin  
029523

Marble  
Carbon  
029534

Marble  
Forest  
029547

Marble  
Russet  
029500

Grain  
Light Natural  
013501

Grain  
Coral  
013502

Grain  
Glacier  
013504

Grain  
Driftwood  
013505

**Shade High**

							
--	---	---	---	---	--	---	---

Shade High  
Lemon-Gold  
010106

Shade High  
Electric Blue-  
Aubergine 010118

Shade High  
Silver-Polar night  
011904

Shade High  
Beige-Dark Chocolate  
011901

Shade High  
Umber-Tobacco  
011903

Shade High  
Olive-Deep Forest  
011907

Shade High  
Brass-Indigo  
011908

Shade High  
Plum-Fig  
011900

**Craft Fundament**

							
---	---	---	---	---	---	---	---

Grain  
Chutney  
013506

Grain  
Lemon  
013507

Craft Fundament  
Wool White  
149309

Craft Fundament  
Caramel  
149311


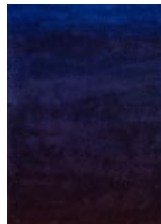




Craft Fundament  
Chocolate Cream  
149305

Craft Plait  
Natural  
049006

Craft Plait  
Denim  
049008

Craft Plait  
Stone  
049004

**Grid**

					
--	---	---	---	---	--

Shade High  
Lemon-Gold  
011906

Shade High  
Electric Blue-  
Aubergine 011918



Grid  
Stone  
129011

Grid  
Slate  
129004

Grid  
Ink  
129008

Grid  
Cacao  
129015





**Frame**

	
---	---

Frame  
natural  
129311

Frame  
mustard  
129306

**Craft Matter**

			
---	---	---	---

Craft Matter Plain  
Warm White  
049106

Craft Matter Plain  
Ash Grey  
049107

Craft Matter Check  
Ash-Stone Red  
049100

Craft Matter Check  
Slate-Olive  
049104

**Atelier Twill**

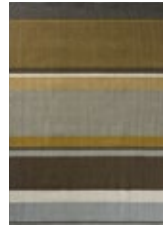
		
---	---	---

Atelier Twill  
Oyster  
049201

Atelier Twill  
Honey  
049206

Atelier Twill  
Mineral  
049207

**Artisan Stack**

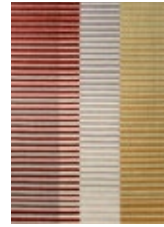


Stack  
Ochre  
090201

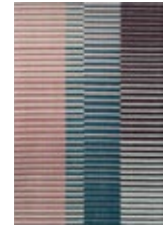


Stack  
Green  
090207

**Artisan Focus**

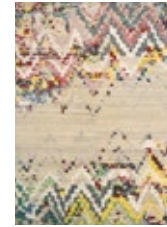


Artisan Focus  
Dawn  
096103



Artisan Focus  
Dusk  
096108

**Yeti**



Yeti Anapurna  
051901



Yeti Anapurna  
051904

**Element Arp**



Element Arp  
Natural  
087601



Element Arp  
Blue  
087608

**Element Chad**



Element Chad  
Brown-Blue  
087705



Element Chad  
Grey-Green  
087704

**Element Moore**



Element Moore  
Caramel  
087801



Element Moore  
Moss  
087807

**Decor**



Decor Rhythm  
Tangerine  
098003



Decor State  
Soft Green  
097107



Decor Groove  
Electric Blue  
097708



Decor Groove  
Burnt Orange  
097703



Decor Flow  
Soft Sand  
091309



Decor Flow  
Caviar  
091305



Decor Riff  
Straw Yellow  
098206



Decor Riff  
Water Blue  
098208



Decor Scape  
Wool White  
095001



Decor Scape  
Natural Grey  
095004



Decor Primi  
Double Cream  
092101



Decor Plateau  
Moss  
091907



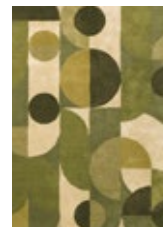
Decor Plateau  
Terra  
091903



Decor Miller  
Spring  
095108



Decor Miller  
Fall  
095105



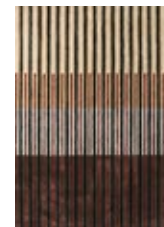
Decor Cosmo  
Greens  
095207



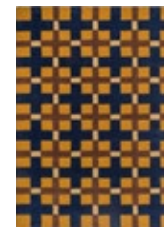
Decor Cosmo  
Red-Pale Green  
095203



Decor Lola  
095403



Decor Proof  
095907

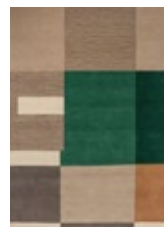


Decor Milano  
Golden Ochre  
097806

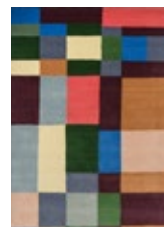
**Estella**



Decor Milano  
Royal Blue  
097808



Decor Bass  
Silent Beige  
094201



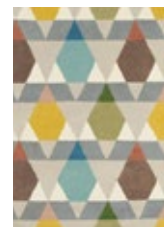
Decor Beat  
Kaleidoscope  
094809



Estella Domino  
083901



Estella Summer  
085200



Estella Vases  
089502



Estella Submarine  
089408



Estella Submarine  
089405





# BRINK & CAMPMAN

Albert Schweitzerstraat 3  
7131 PG Lichtenvoorde | The Netherlands  
tel +31 (0)544 390 400  
brinkandcampman.com  
info@brinkandcampman.com



## Sales offices

The Netherlands: tel + 31 (0)544 390 422  
Europe: tel + 31 (0)544 390 429  
Germany, Austria, Switzerland: tel + 31 (0)544 390 430  
Americas, Asia, Africa, Oceania: tel + 31 (0)544 390 428

## The Netherlands, Germany, Austria & Switzerland

Robert Apeldoorn  
m +31 (0)6 101 329 64  
rapeldoorn@brinkandcampman.com

## Export

Jasper Kempers  
m +31 (0)6 128 157 72  
jkempers@brinkandcampman.com

We have partners in the following countries:

Australia	Greece	Portugal
Austria	Hong Kong	Romania
Azerbaijan	Hungary	Serbia
Belgium	Ireland	Singapore
Bolivia	Italy	Slovakia
Brazil	Japan	South Africa
Bulgaria	Kazakhstan	South-East Asia
Canada	Korea	Spain
China	Kuwait	Sweden
Colombia	Latvia	Switzerland
Czech Republic	Lithuania	Ukraine
Denmark	Malta	United Kingdom
Estonia	Mexico	USA
France	New Zealand	
Finland	Norway	
Germany	Poland	

## Colophon

### editorial

Studio Brink & Campman

### collection design

Studio Brink & Campman

### maintenance

Please contact our partner James: james.eu

### photography

Studio Sterkenburg  
Studio Floor Knaapen

### styling

Studio Brink & Campman

### graphic design

Studio Brink & Campman

### print

Drukkerij Roelofs

We take reservations for printing errors,  
colour differences, or changes in the collections.

All rights are reserved.

© 2024 Brink & Campman



BY APPOINTMENT TO THE COURT OF THE NETHERLANDS


SMETA





BY APPOINTMENT TO THE COURT OF THE NETHERLANDS

**B&C**

Albert Schweitzerstraat 3  
7131 PG Lichtenvoorde | the Netherlands  
tel +31 (0)544 390 400  
brinkandcampman.com     
info@brinkandcampman.com